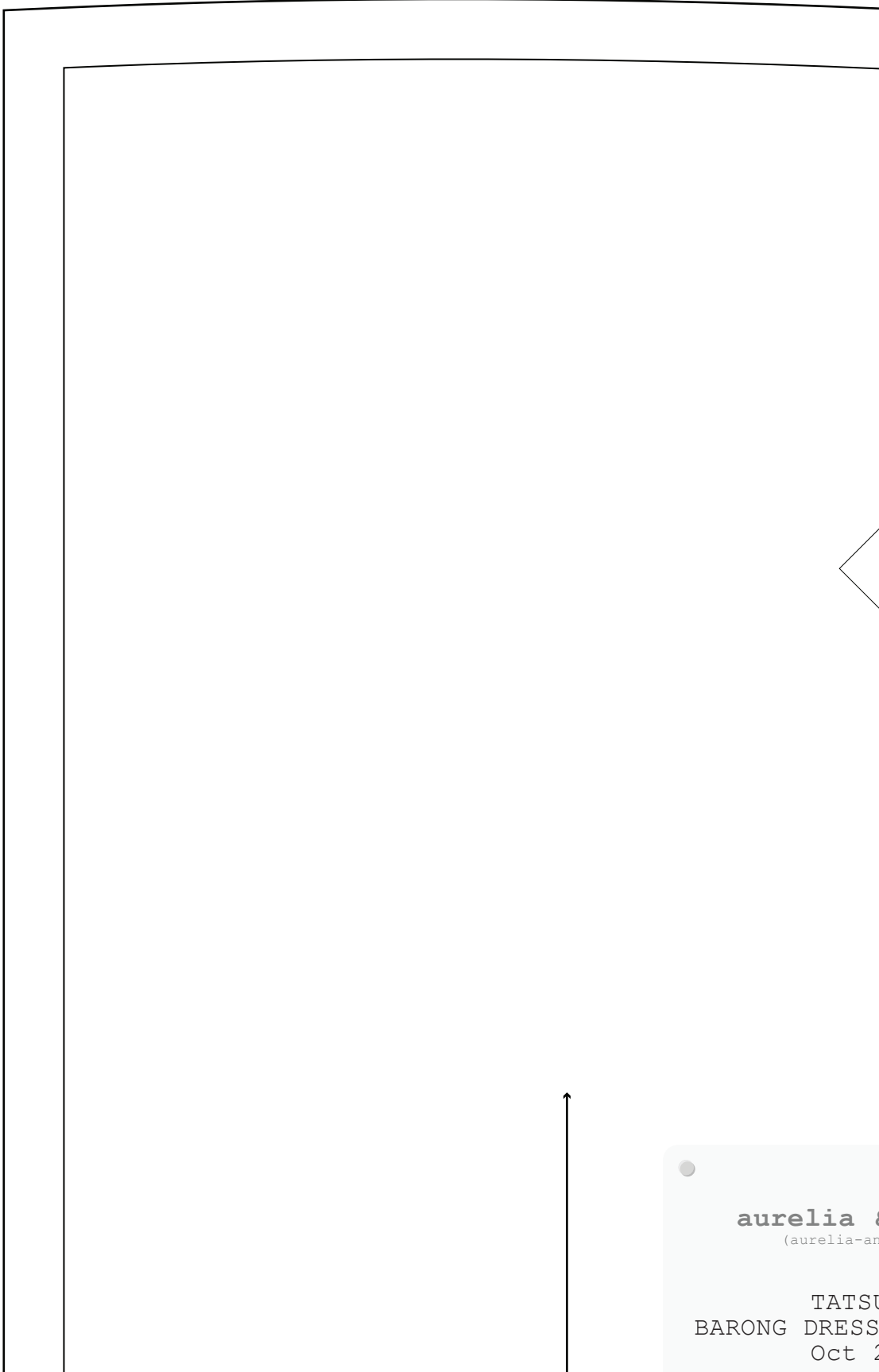


0cm 1cm 2cm 3cm 4cm 5cm

A-1

1/8 1/4 3/8 1/2 5/8 3/4 1in 2in 3in



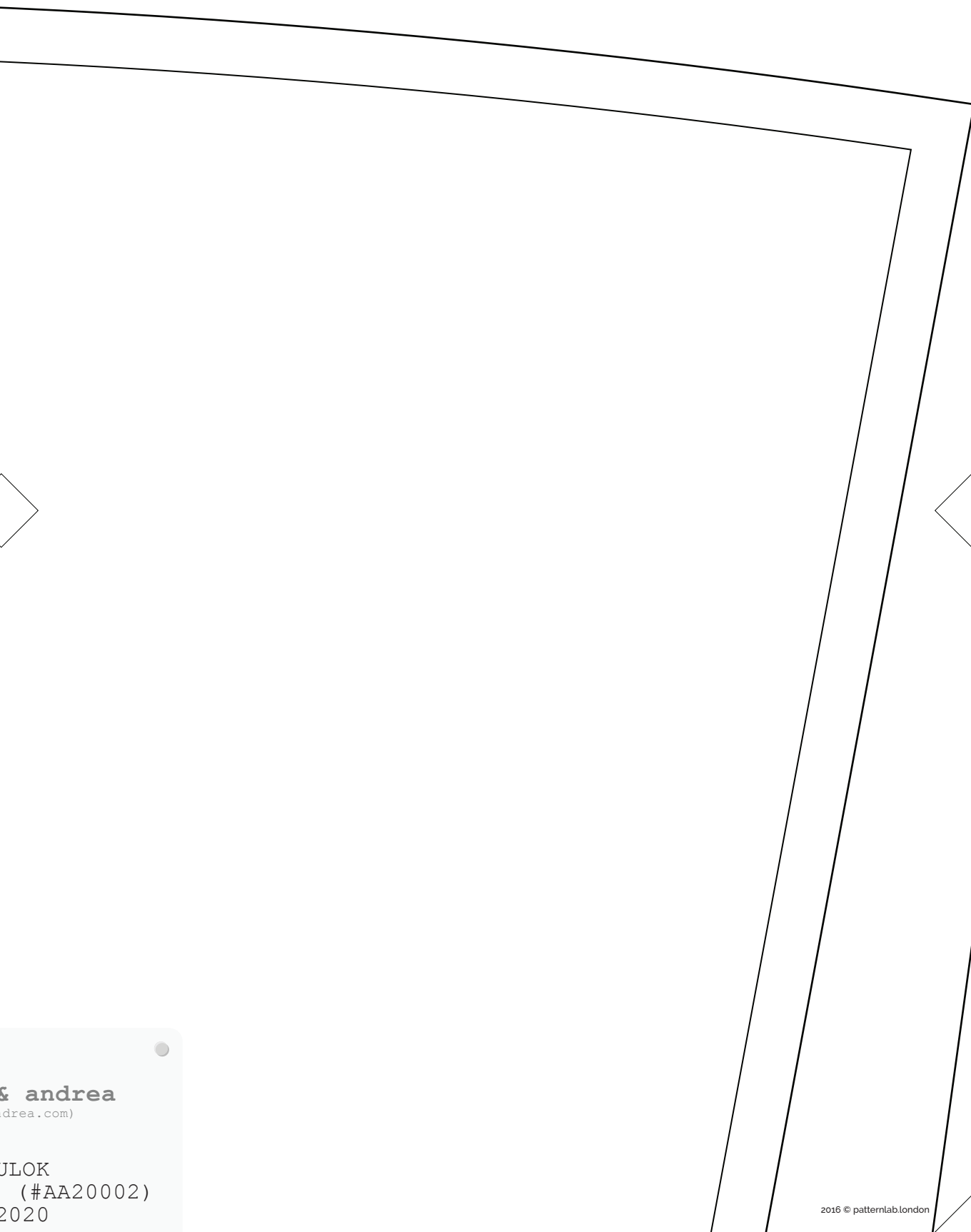
aurelia &
(aurelia-an

TATSU
BARONG DRESS
Oct 2

0cm 1cm 2cm 3cm 4cm 5cm

A-2

1/2 1 3/4 2 5/8 3/4 1 1/8 1 1/2 2in 3in



& andrea
(andrea.com)

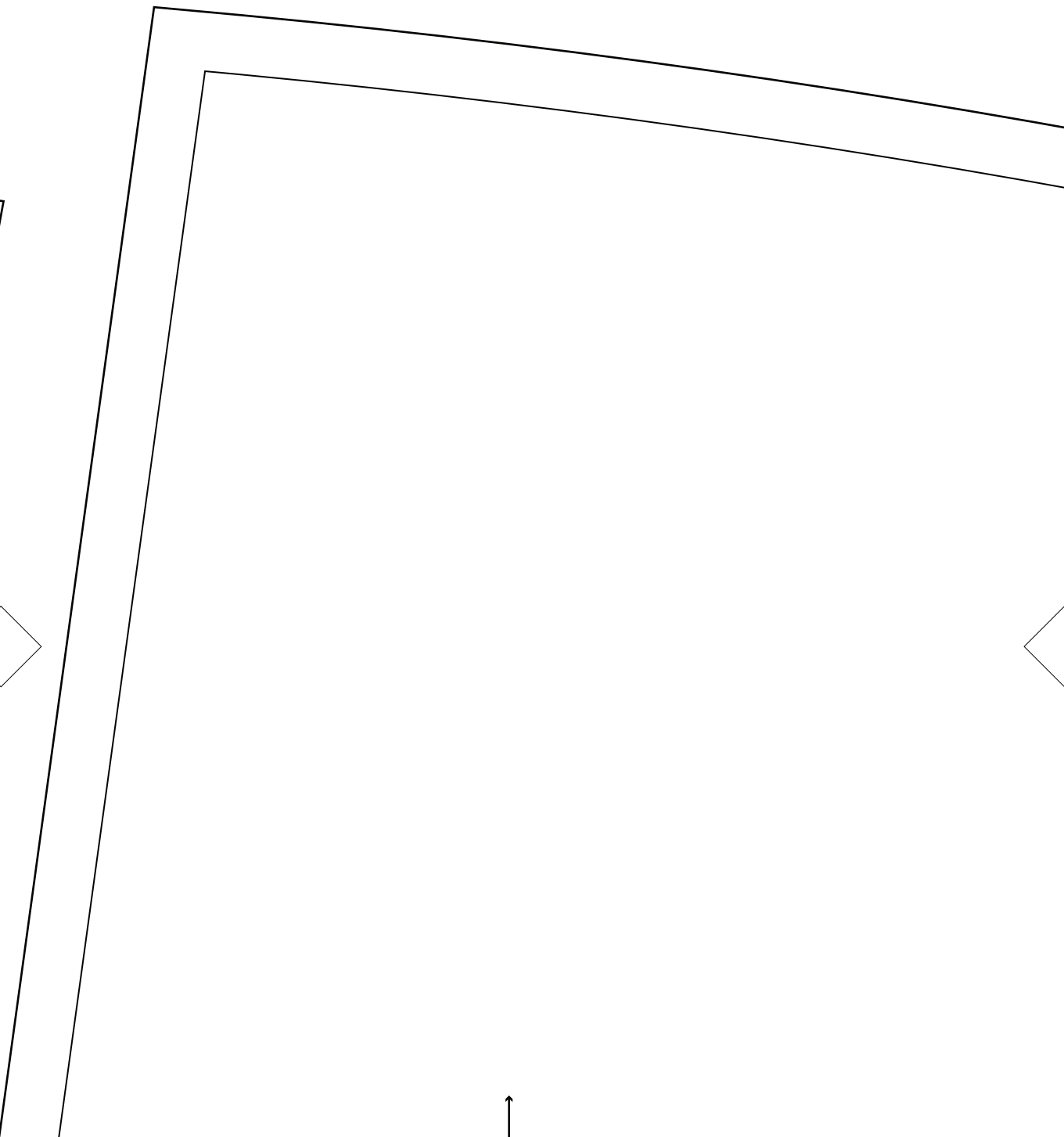
JLOK
(#AA20002)
2020

2016 © patternlab.london

0cm 1cm 2cm 3cm 4cm 5cm

A-3

1/8 1/4 3/8 1/2 5/8 3/4 1in 2in 3in

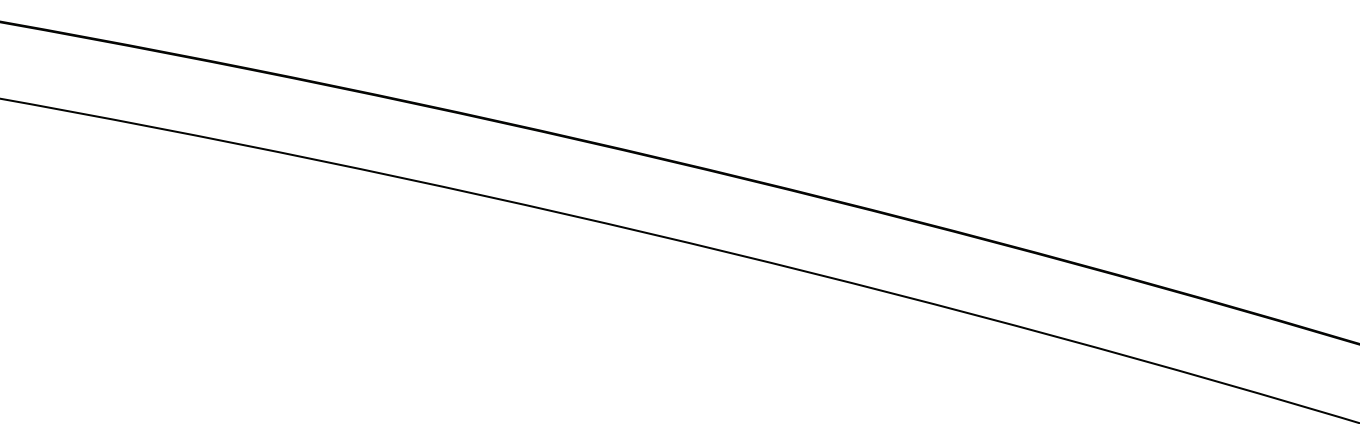


aurelia & andrea
(aurelia-andrea.com)

TATSULOK
BARONG DRESS (#AA20002)
Oct 2020



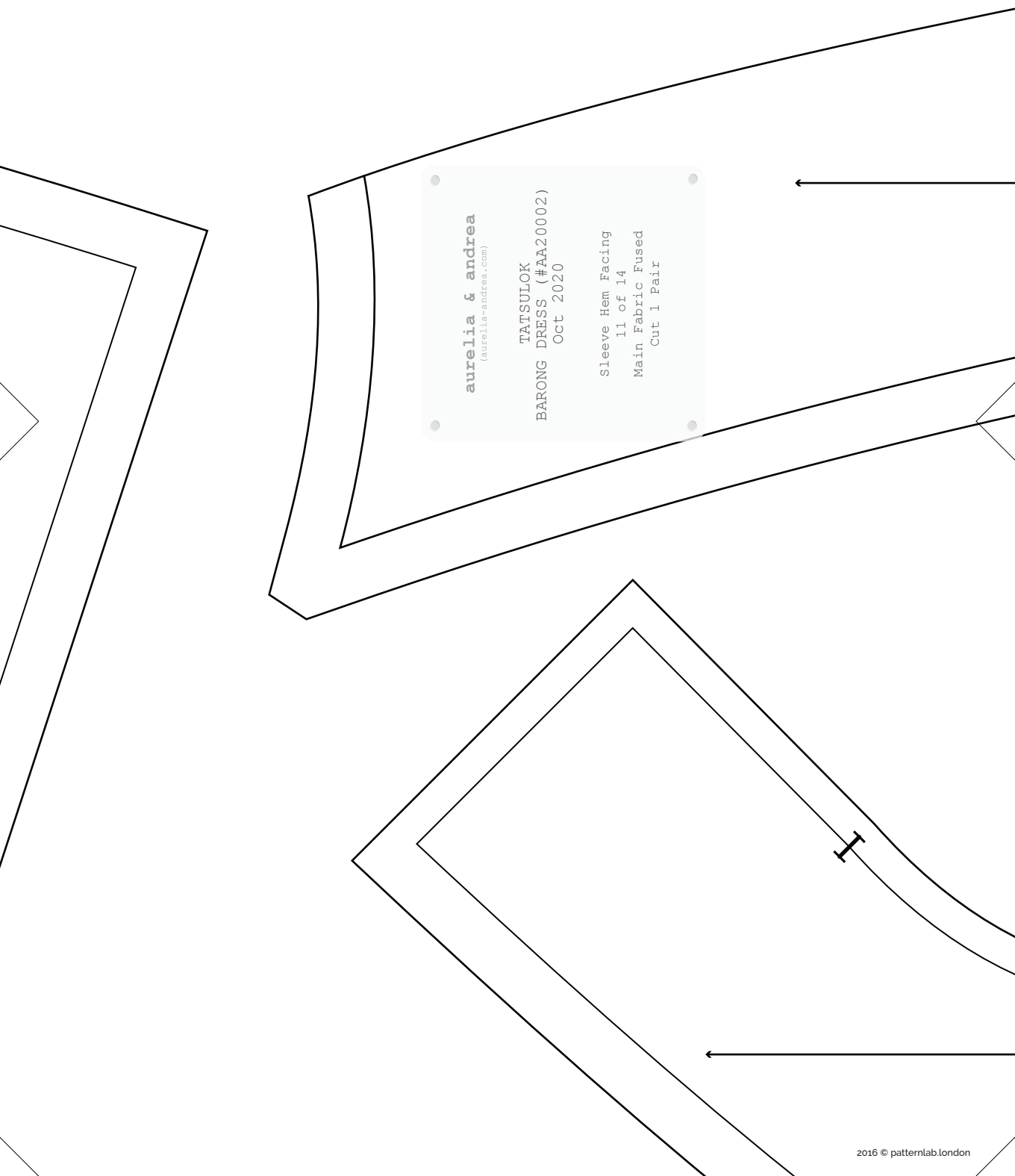
A-4



0cm 1cm 2cm 3cm 4cm 5cm

A-5

1in 2in 3in



aurelia & andrea
(aurelia-andrea.com)

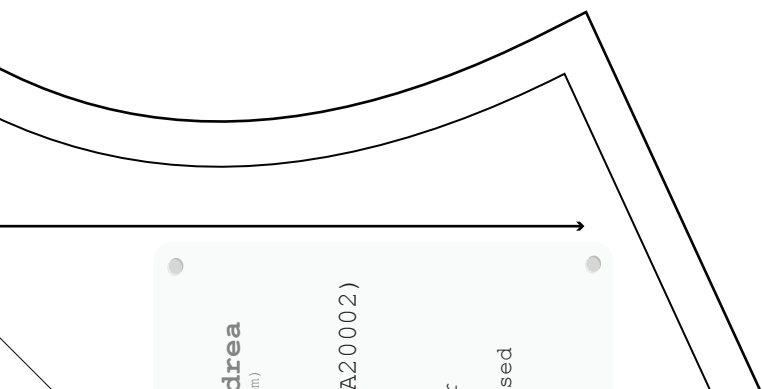
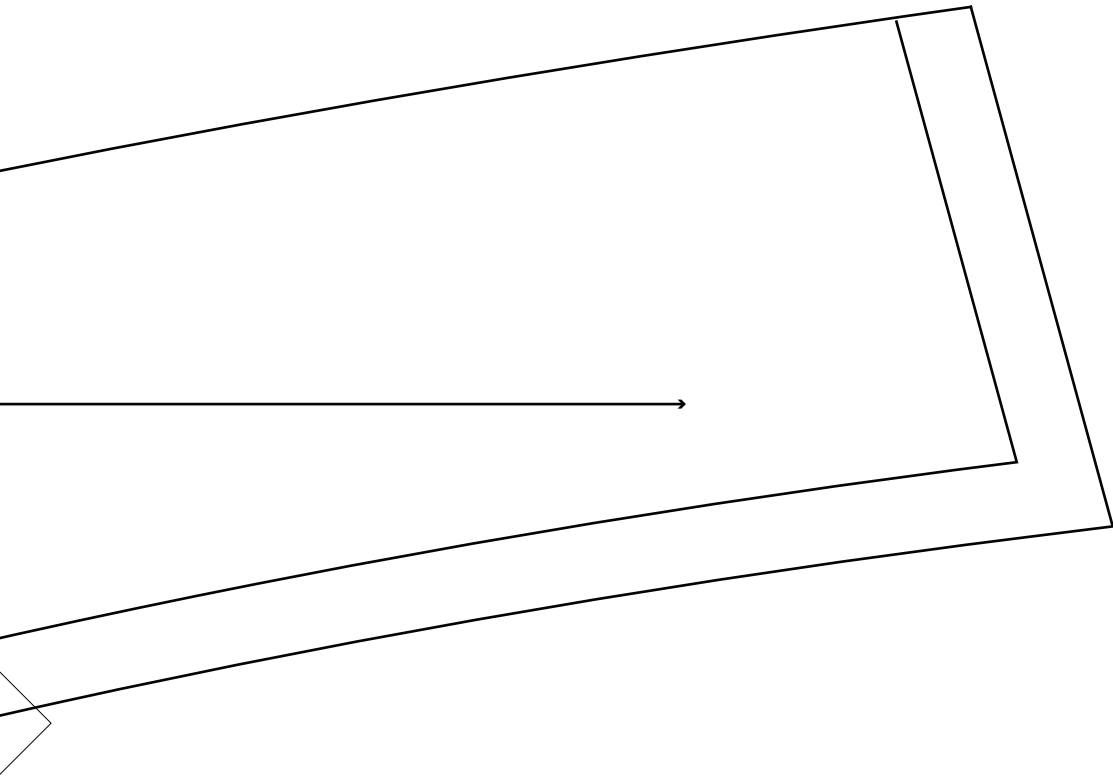
TATSULOK
BARONG DRESS (#AA20002)
Oct 2020

Sleeve Hem Facing
11 of 14
Main Fabric Fused
Cut 1 Pair

0cm 1cm 2cm 3cm 4cm 5cm

A-6

1/8 1/4 3/8 1/2 5/8 3/4 1in 2in 3in



drea
(m)

(A200002)

sed

0cm 1cm 2cm 3cm 4cm 5cm

B-1

1/8 1/4 3/8 1/2 5/8 3/4 1in 2in

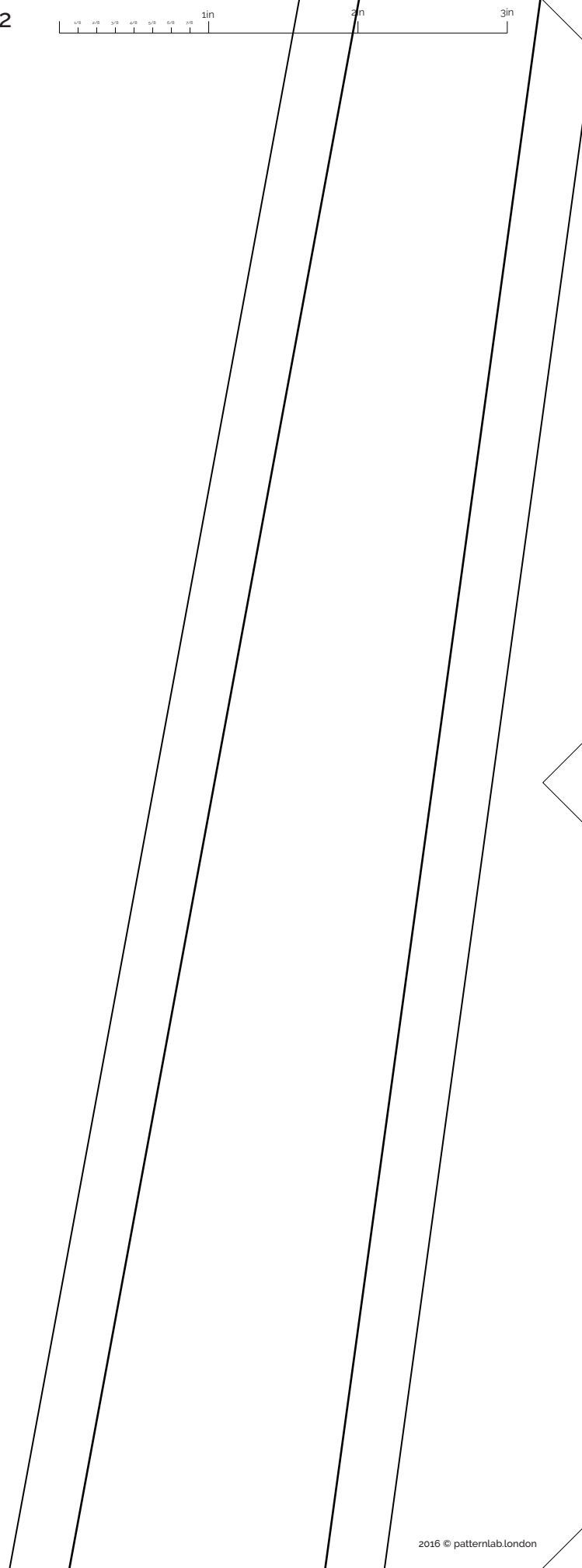
Center Ba
1 of
Main F
Cut 1
Seam Allowa
1cm Seam A

Back Panel
14
Fabric
Pair
Fused
Allowance

3cm 4cm 5cm

B-2

1/8 1/4 3/8 1/2 5/8 3/4 1in 1 1/4 1 1/2 1 3/4 2in 3in



0cm 1cm 2cm 3cm 4cm 5cm

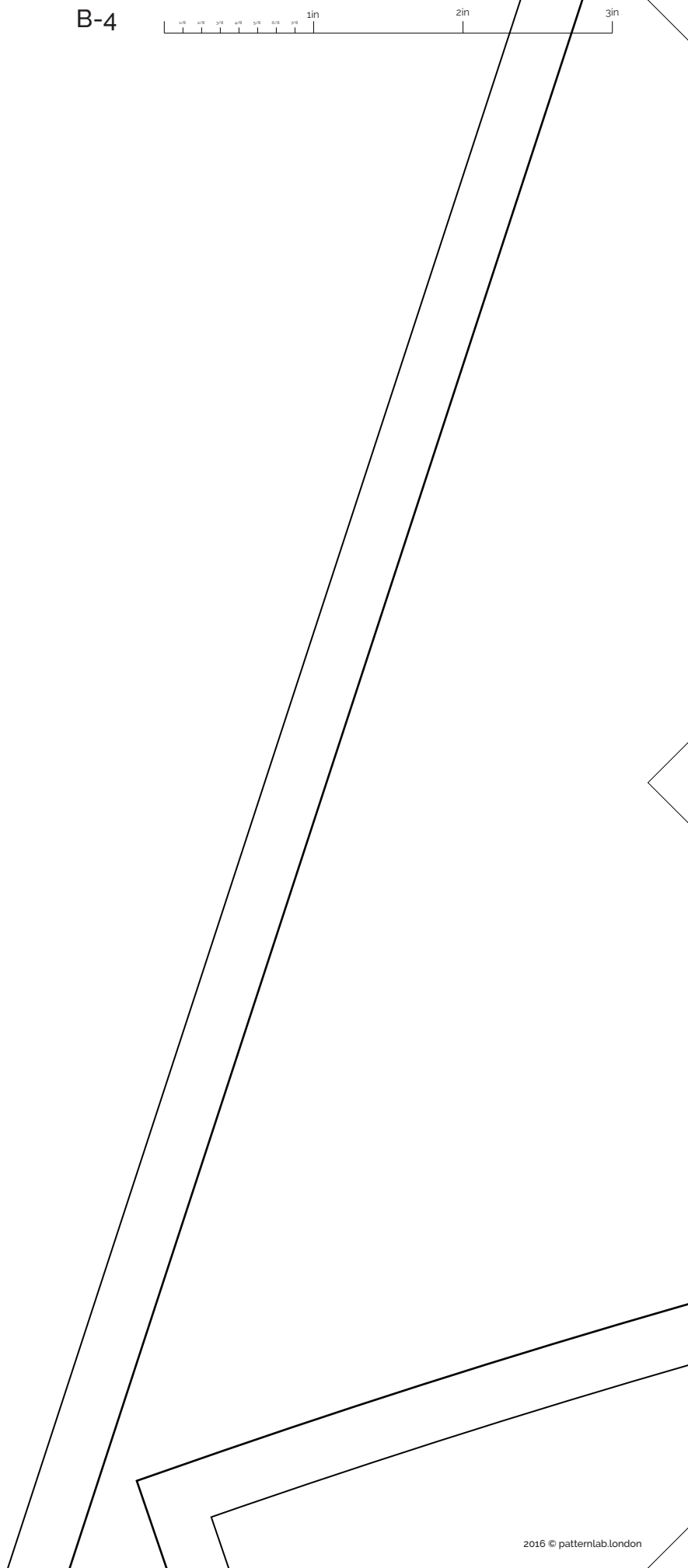
B-3

1/8 1/4 3/8 1/2 5/8 3/4

side Back Panel
2 of 14
Main Fabric
Cut 1 Pair
Seam Allowance Fused
1cm Seam Allowance

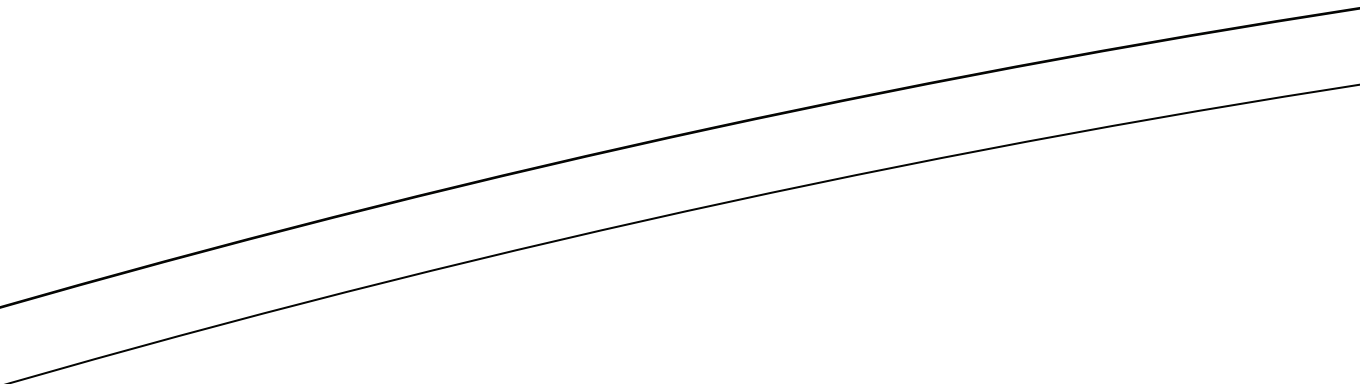


B-4





B-5



0cm 1cm

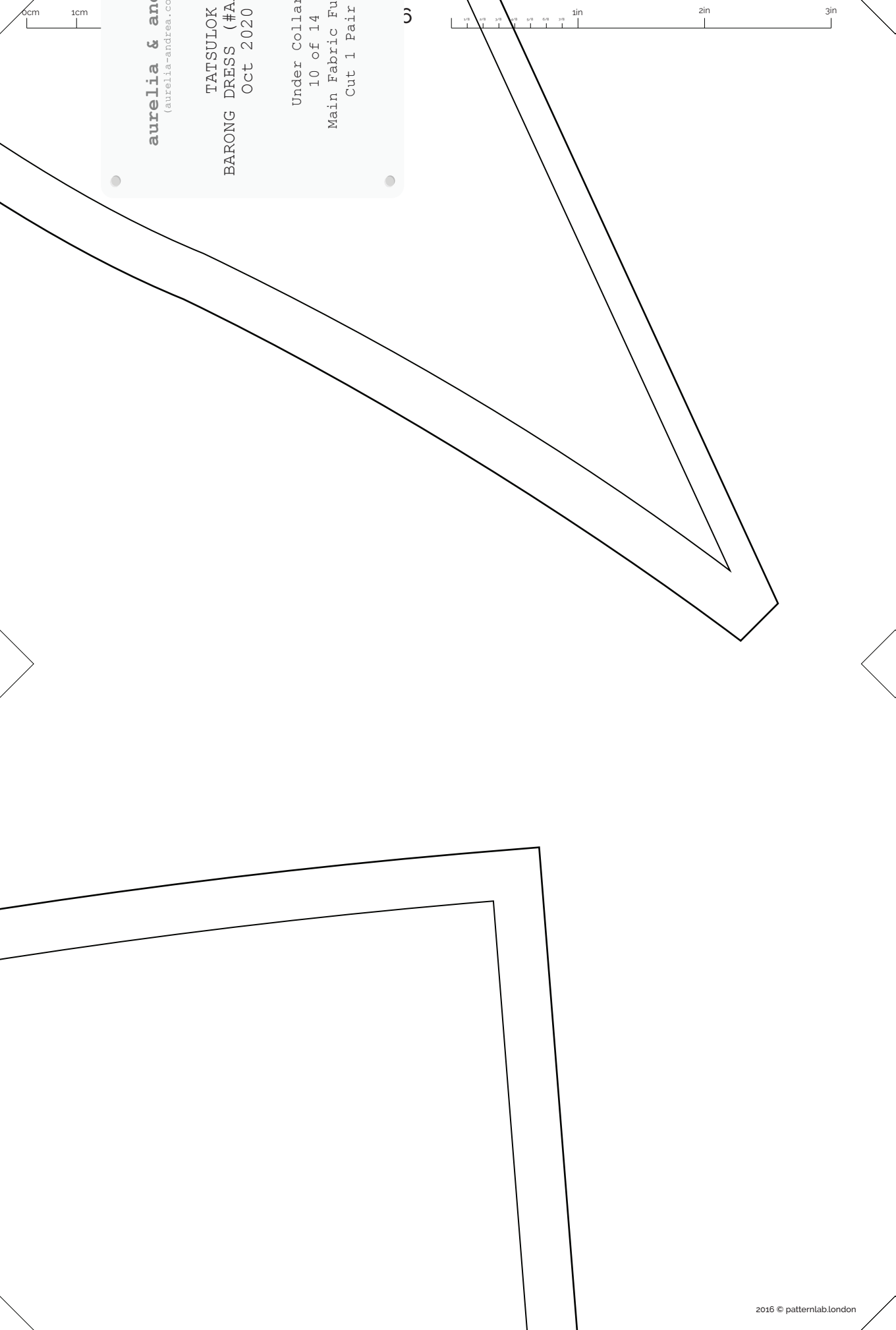
aurelia & andrea
(aurelia-andrea.com)

TATSULOK
BARONG DRESS (#A)
Oct 2020

Under Collar
10 of 14
Main Fabric Fu
Cut 1 Pair

0

1in 2in 3in



0cm 1cm 2cm 3cm 4cm 5cm

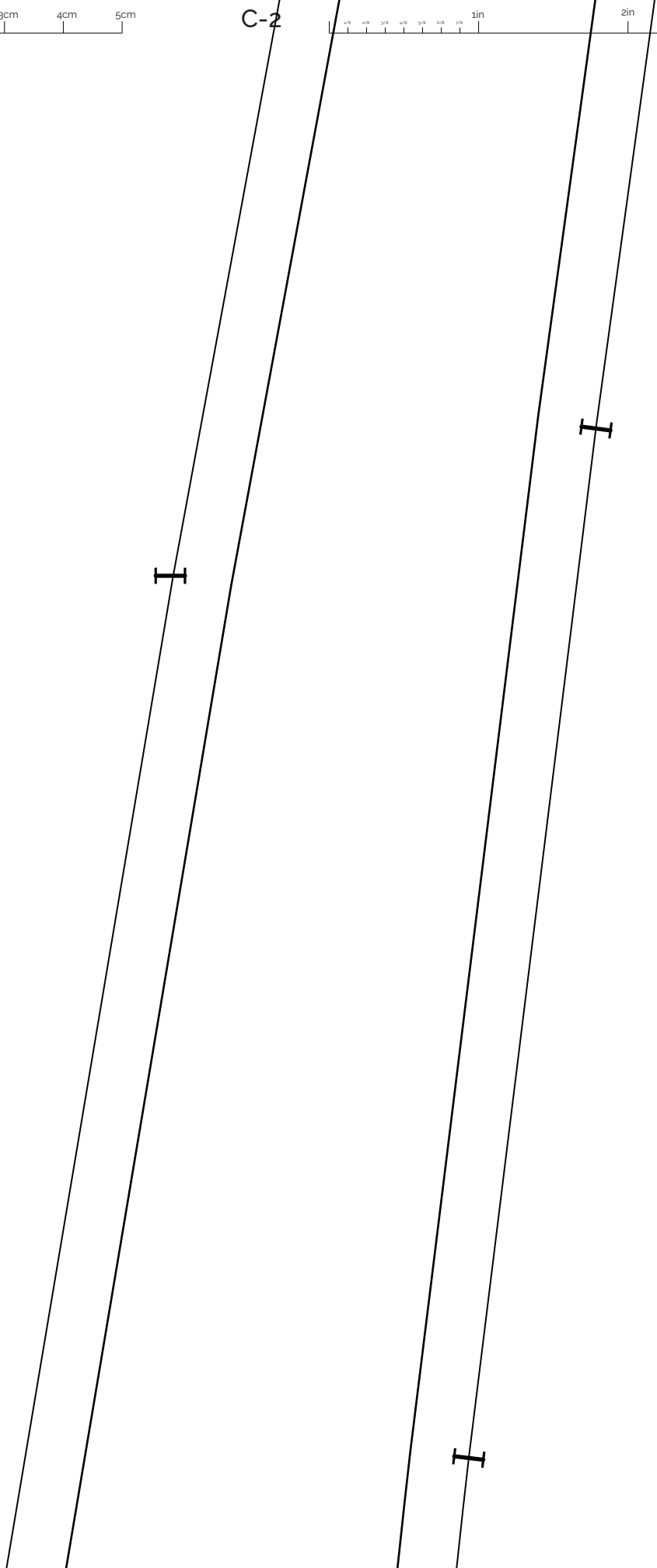
C-1

1/8 1/4 3/8 1/2 5/8 3/4 1in 2in 3in





C-2



0cm 1cm 2cm 3cm 4cm 5cm

C-3

1/8 1/4 3/8 1/2 5/8 3/4 1in 2in 3in

H

0cm 1cm 2cm 3cm 4cm 5cm

C-4

0 1/8 1/4 3/8 1/2 5/8 3/4 1in 2in 3in

I

0cm 1cm 2cm 3cm 4cm 5cm

C-5

1/8 1/4 3/8 1/2 5/8 3/4 1in 2in 3in

aurelia &
(aurelia-andre)

TATSUL
BARONG DRESS (C)
Oct 2016

Front Side Bot
3 of 1
Main Fab
Cut 1 Pa
Seam Allowanc
1cm Seam All



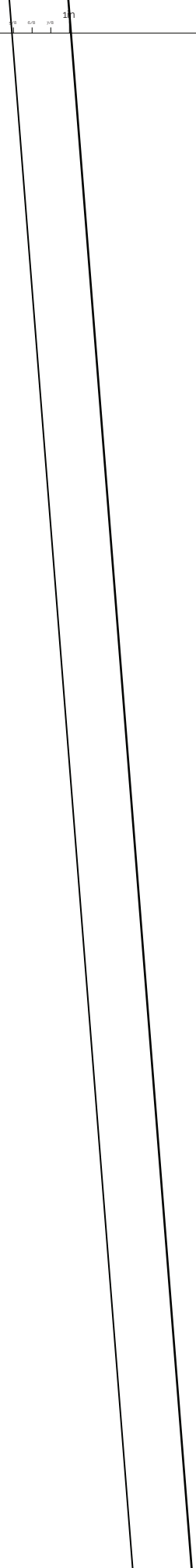
C-6



andrea
 (a.com)

OK
 (#AA20002)
 20

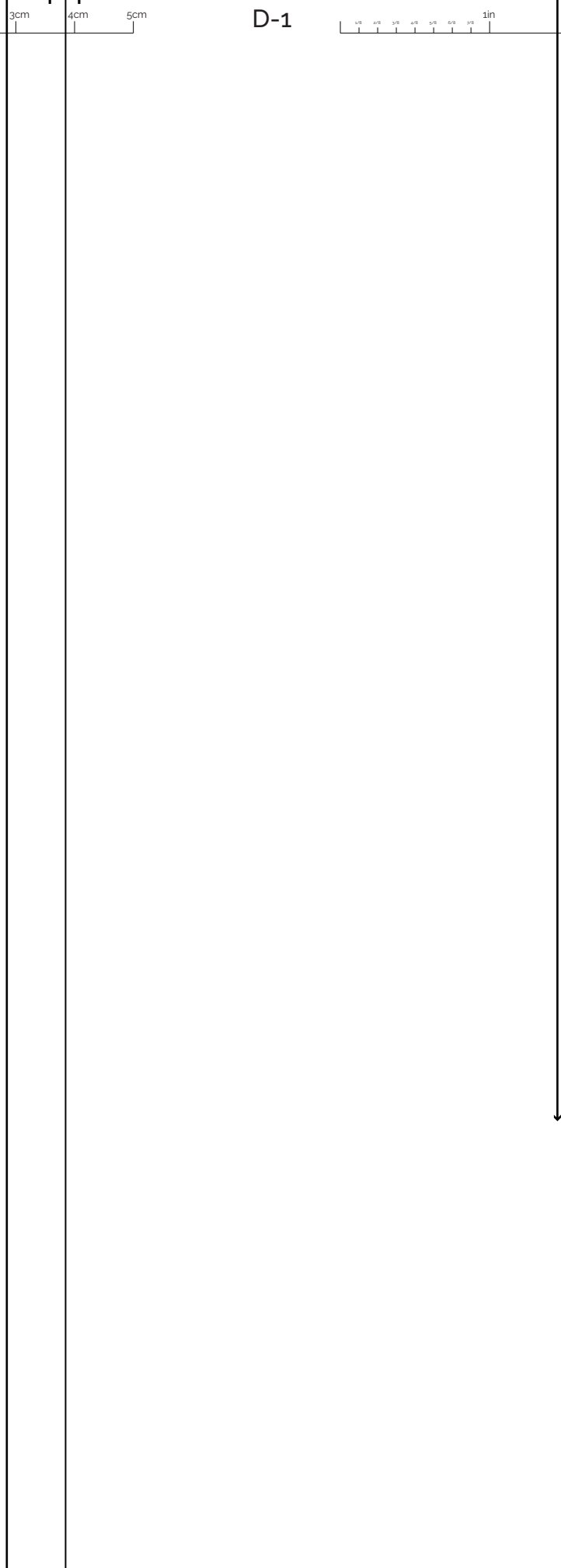
tom Panel
 4
 ric
 air
 ce Fused
 Lowance

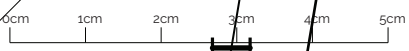


0cm 1cm 2cm 3cm 4cm 5cm

D-1

1/8 1/4 3/8 1/2 5/8 3/4 1in 2in 3in





D-2





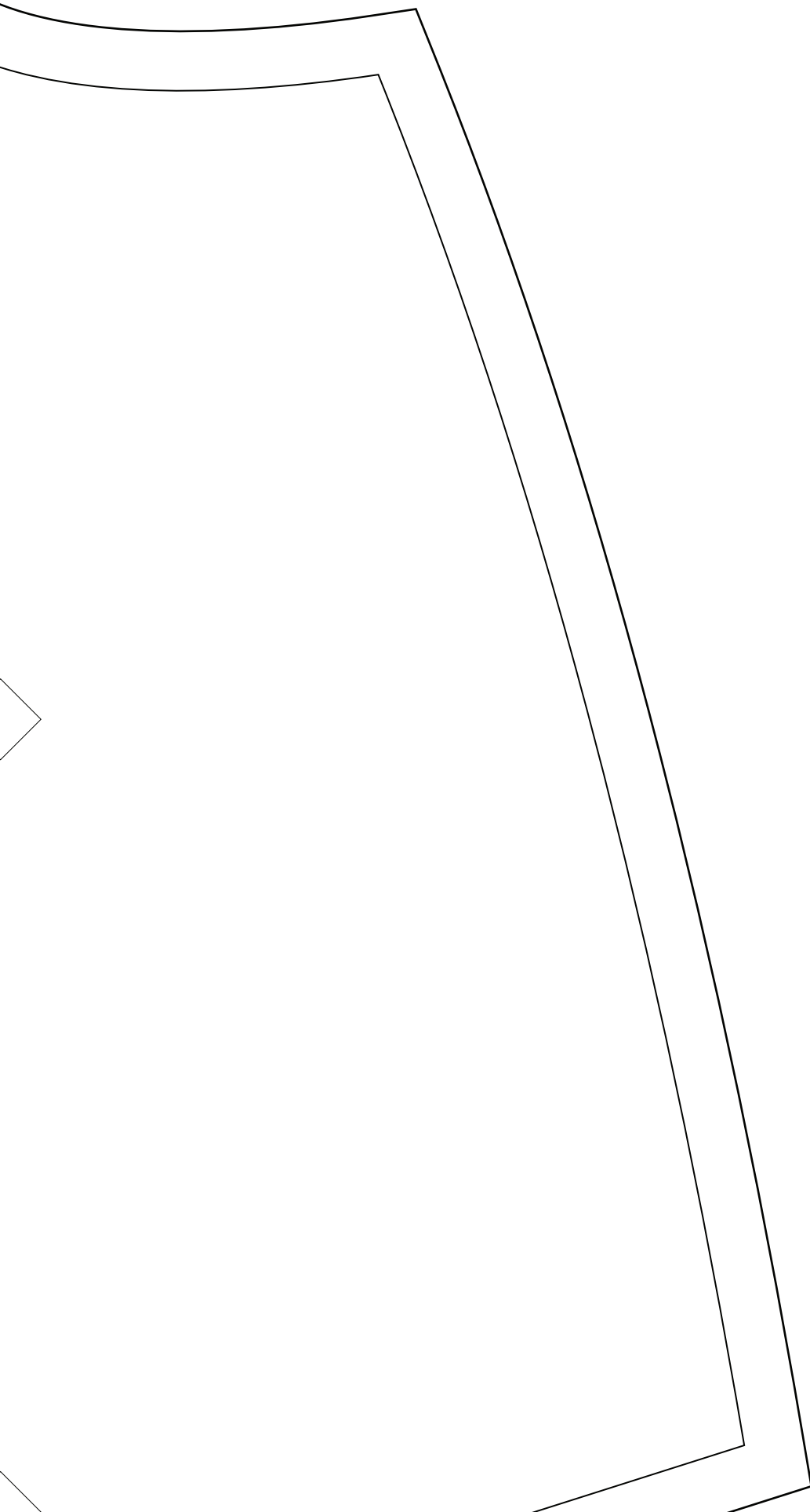
D-3



0cm 1cm 2cm 3cm 4cm 5cm

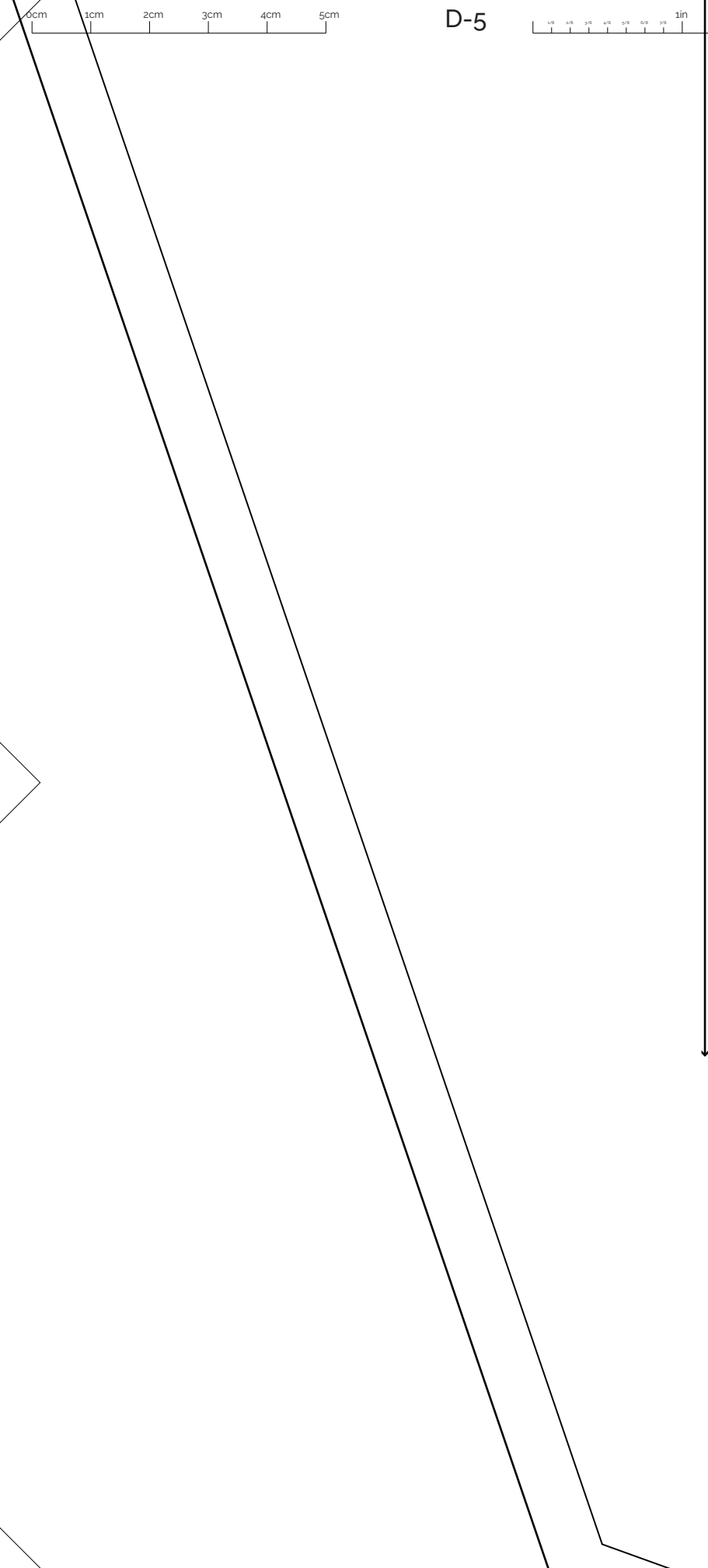
D-4

1/8 1/4 3/8 1/2 5/8 3/4 1in 2in 3in





D-5



0cm 1cm 2cm 3cm 4cm 5cm

D-6

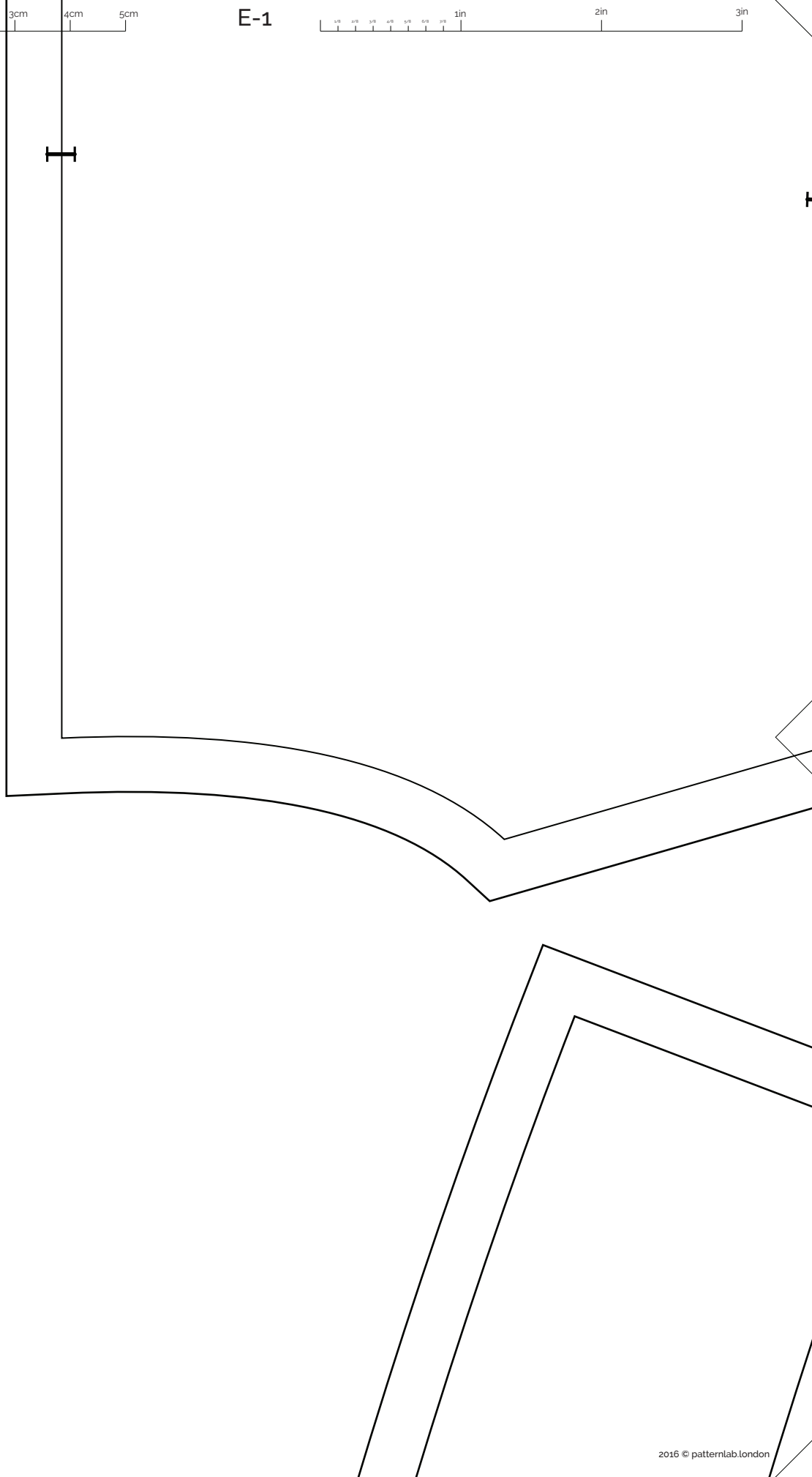
1/8 1/4 3/8 1/2 5/8 3/4 1in 2in 3in



0cm 1cm 2cm 3cm 4cm 5cm

E-1

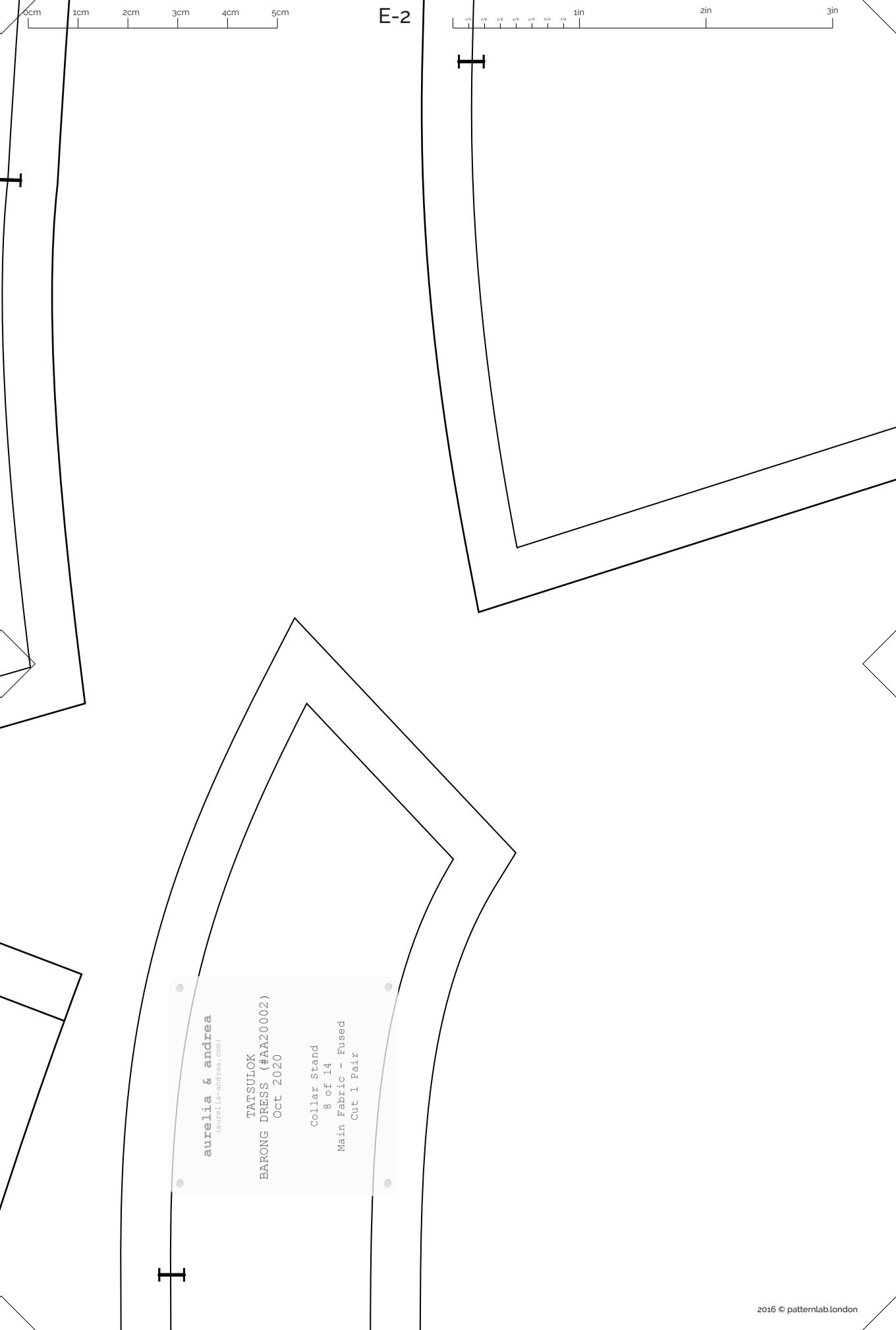
1/8 1/4 3/8 1/2 5/8 3/4 1in 2in 3in



0cm 1cm 2cm 3cm 4cm 5cm

E-2

1/4 1/2 3/4 1 1 1/4 1 1/2 1 3/4 2in 3in



aurelia & andrea
(aurelia-andrea.com)

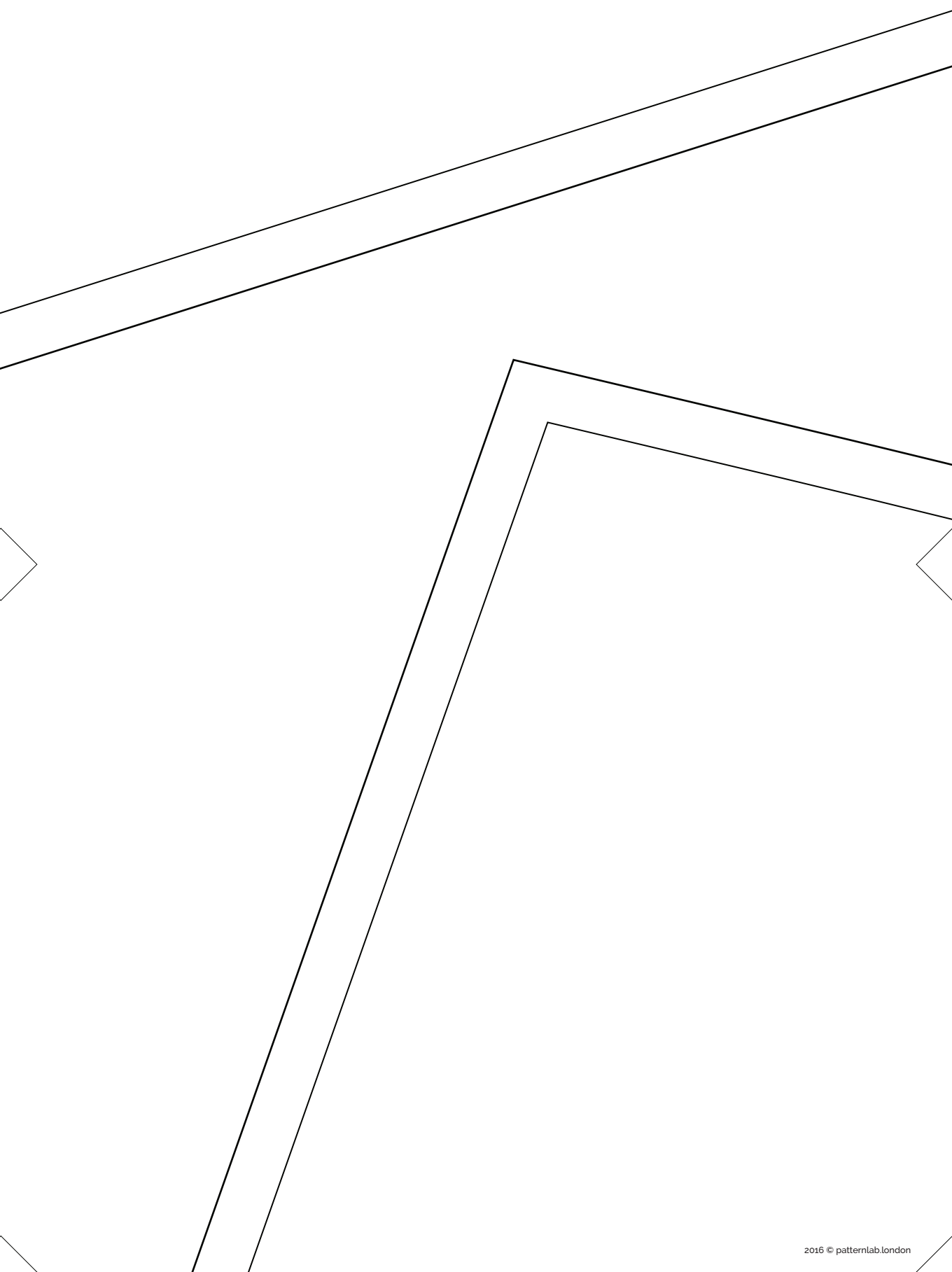
TATSUIOK
BARONG DRESS (#AA20002)
Oct 2020

Collar Stand
8 of 14
Main Fabric - Fused
Cut 1 Pair

0cm 1cm 2cm 3cm 4cm 5cm

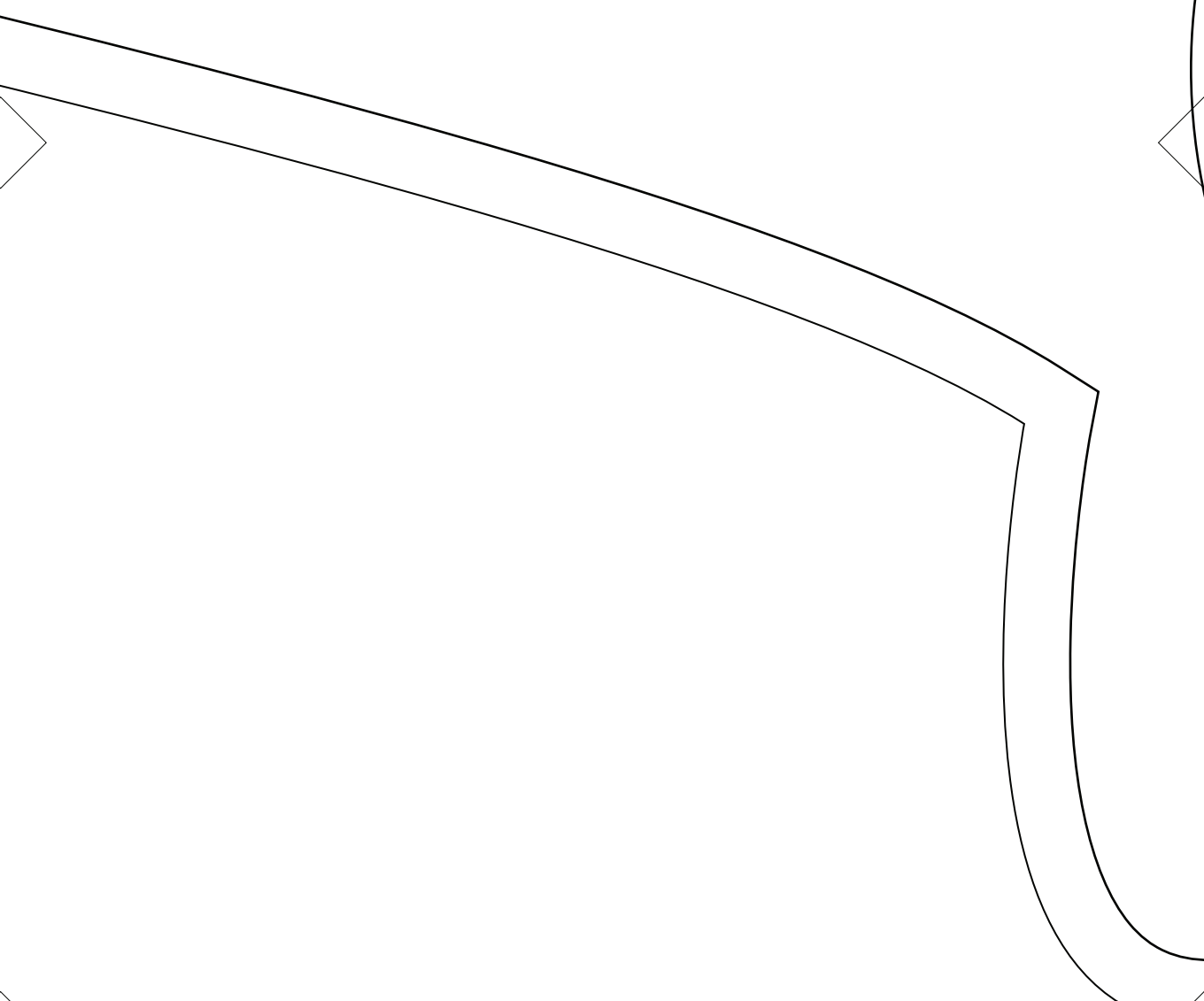
E-3

1/8 1/4 3/8 1/2 5/8 3/4 1in 2in 3in





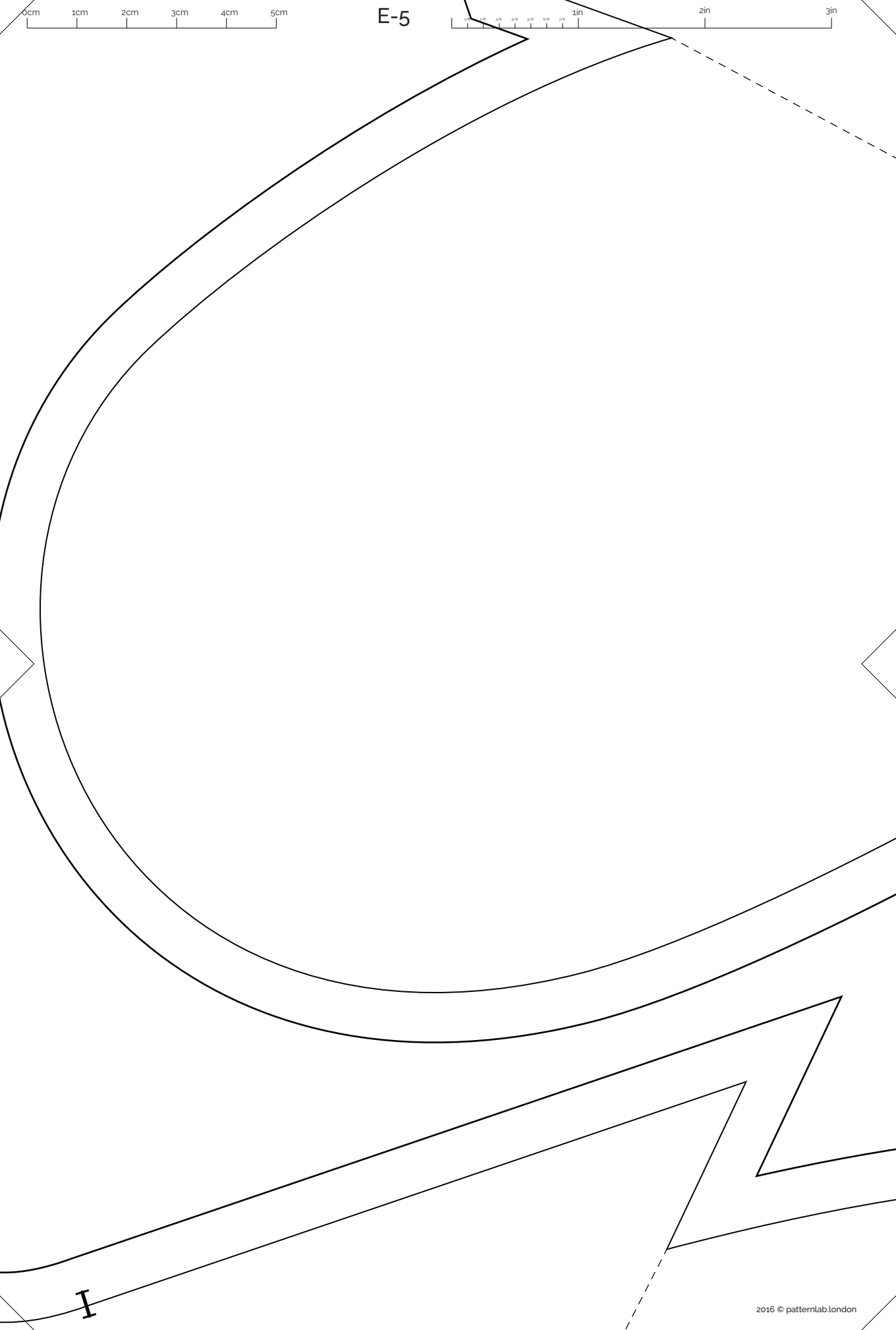
E-4



0cm 1cm 2cm 3cm 4cm 5cm

E-5

0in 1in 2in 3in

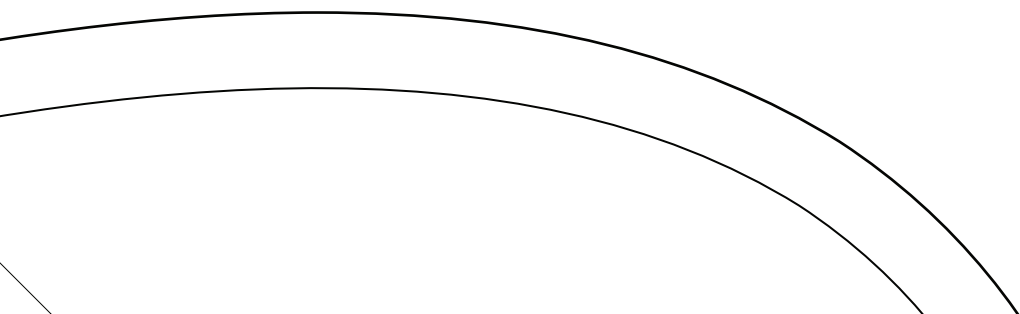
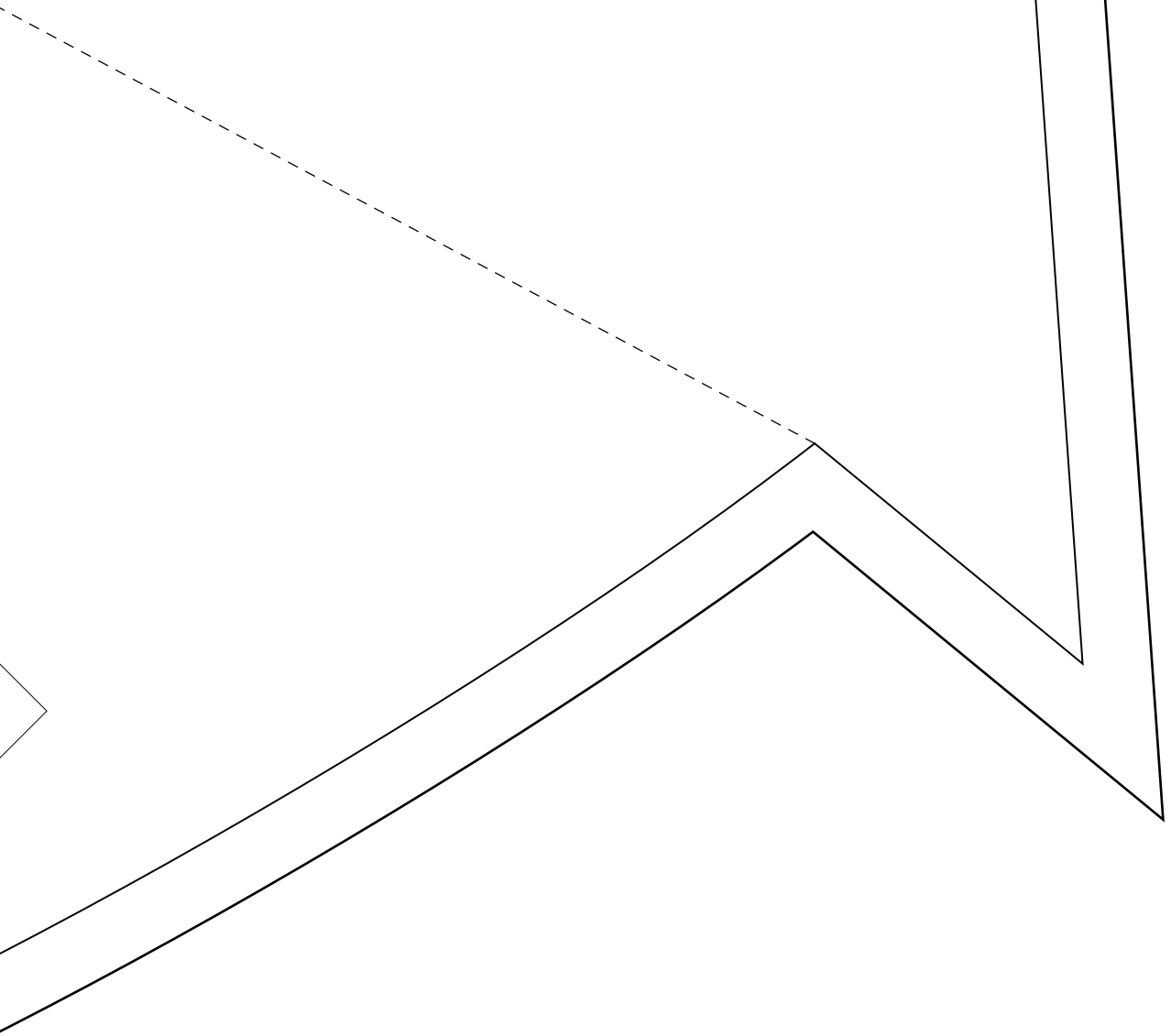


I

0cm 1cm 2cm 3cm 4cm 5cm

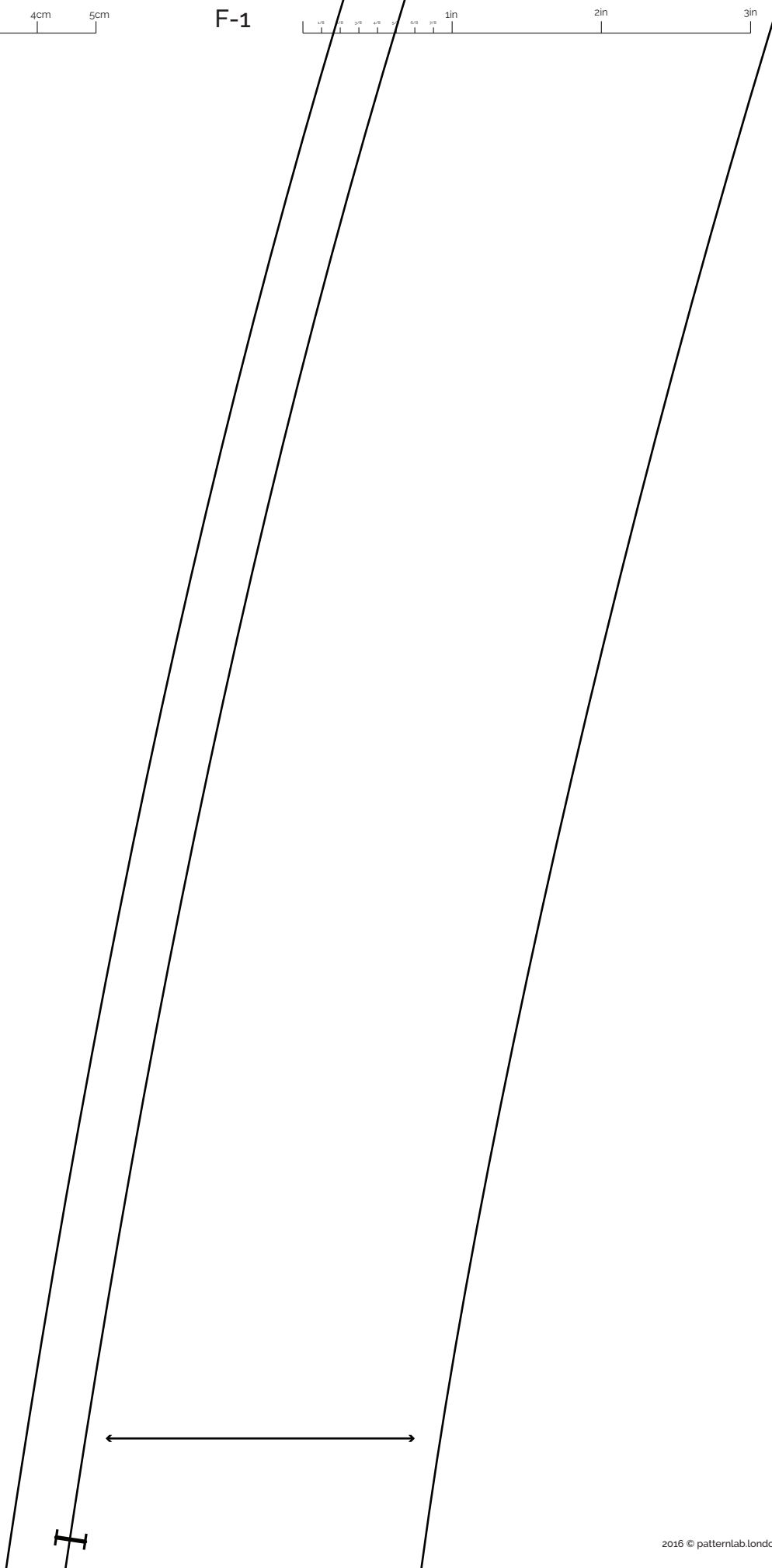
E-6

1/8 1/4 3/8 1/2 5/8 3/4 1in 2in 3in





F-1

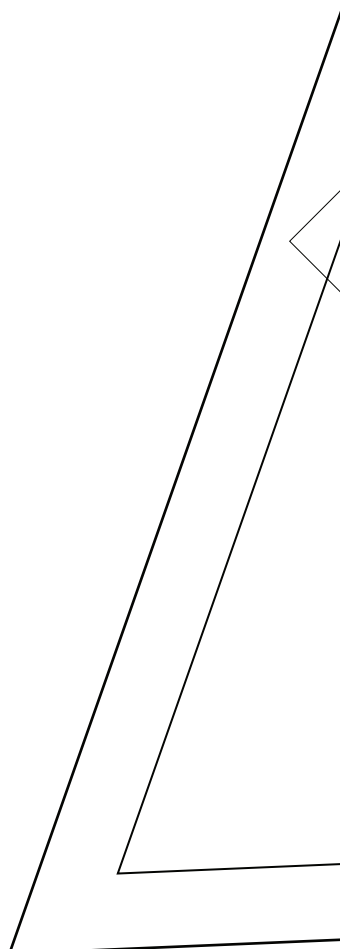
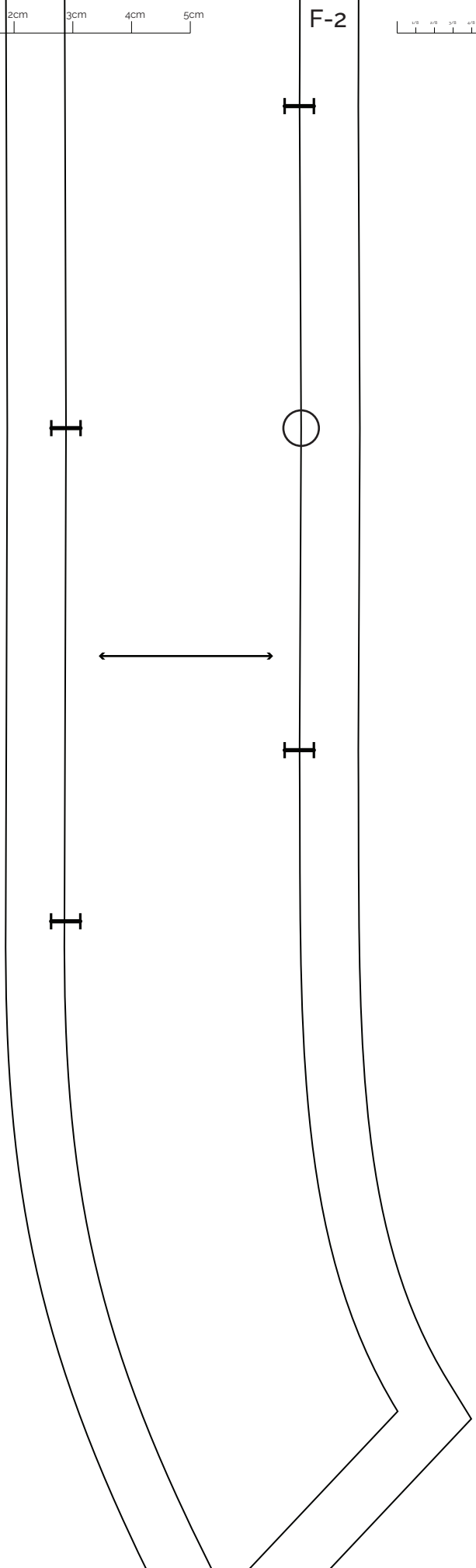


I

0cm 1cm 2cm 3cm 4cm 5cm

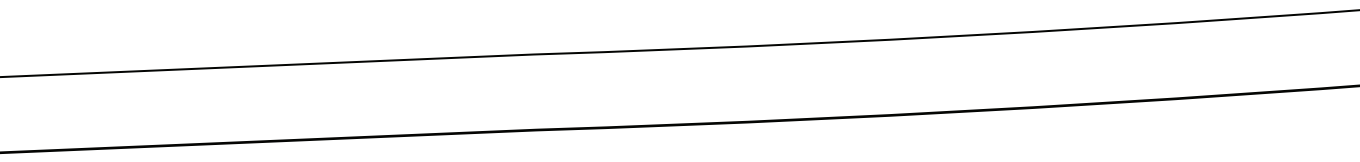
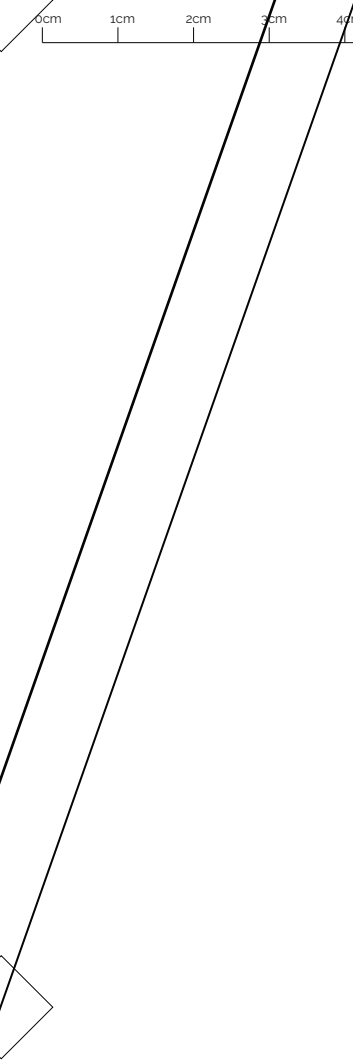
F-2

1/8 1/4 3/8 1/2 5/8 3/4 1in 2in 3in





F-3



0cm 1cm 2cm 3cm 4cm 5cm

F-4

1/8 1/4 3/8 1/2 5/8 3/4 1in 2in 3in

TATSUIOK
BARONG DRESS (#AA200002)
Oct 2020

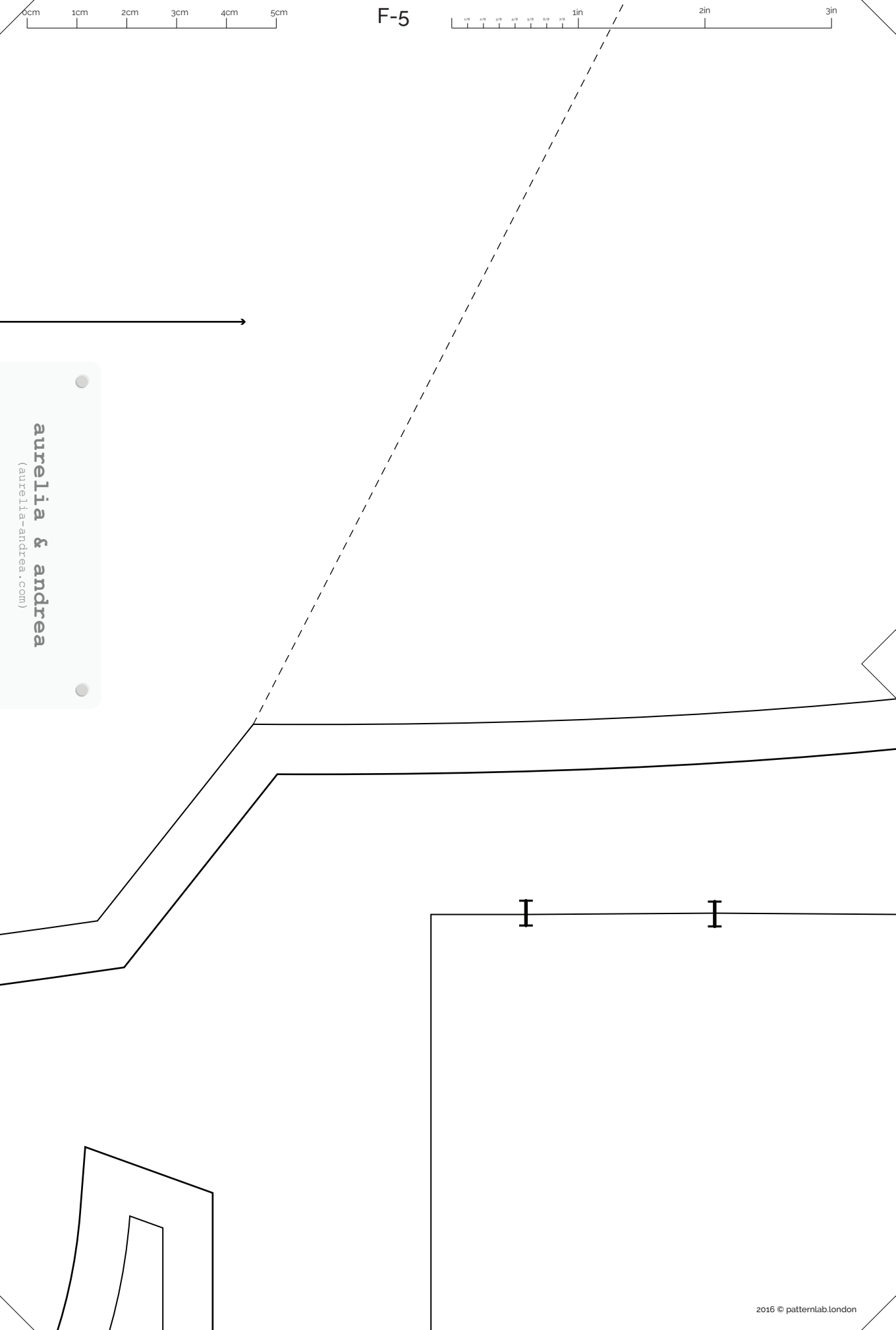
Front Side Top Panel
4 of 14
Main Fabric
Cut 1 Pair
Seam Allowance Fused
1cm Seam Allowance



F-5



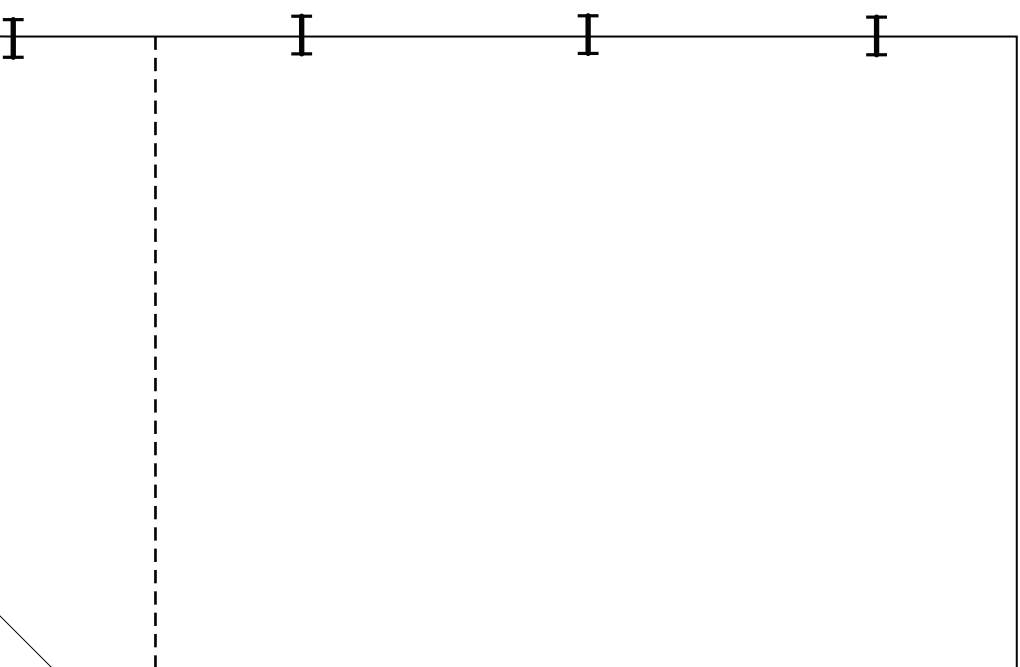
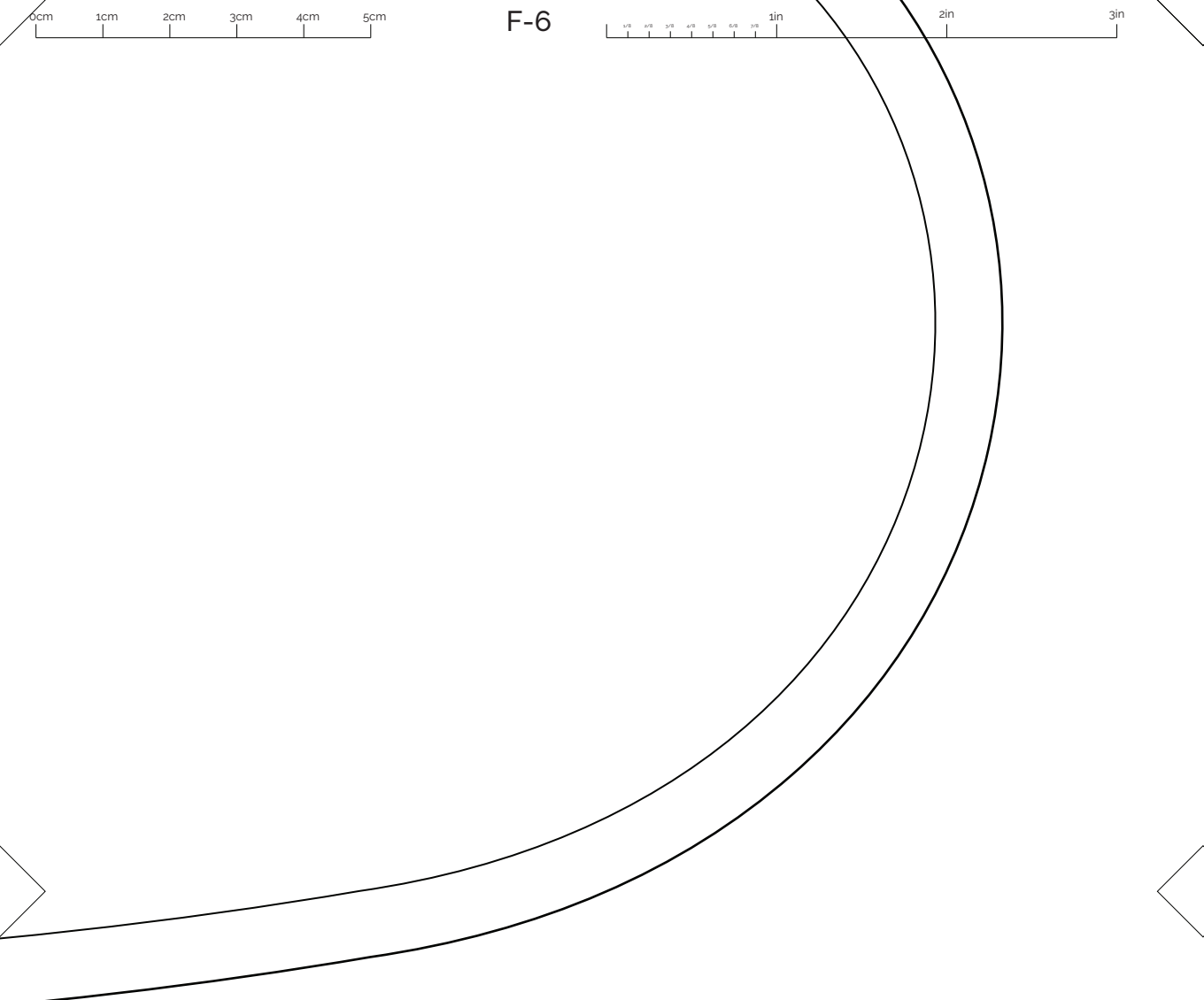
aurelia & andrea
 (aurelia-andrea.com)

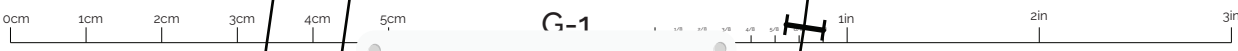


0cm 1cm 2cm 3cm 4cm 5cm

F-6

1/8 1/4 3/8 1/2 5/8 3/4 1in 2in 3in





G-1

aurelia & andrea
(aurelia-andrea.com)

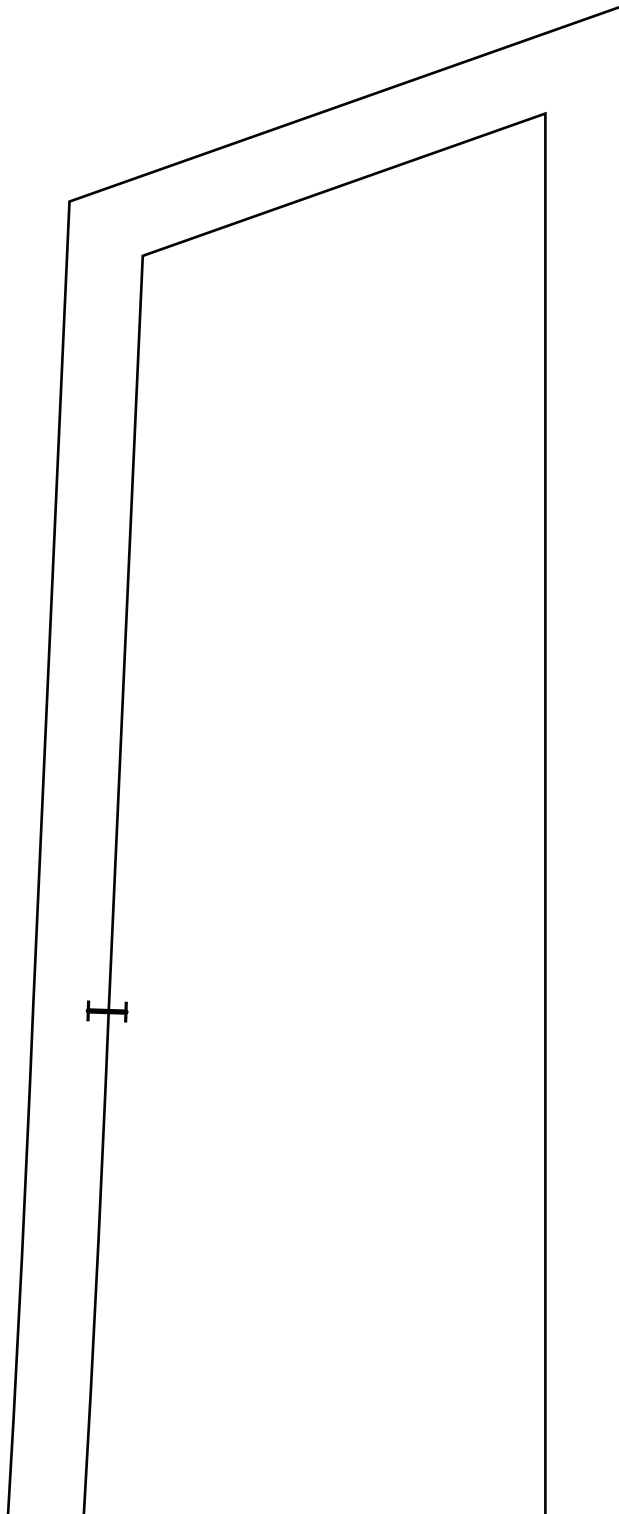
TATSULOK
BARONG DRESS (#AA20002)
Oct 2020

Back Hem Facing
12 of 14
Main Fabric Fused
Cut 1 Pair

0cm 1cm 2cm 3cm 4cm 5cm

G-2

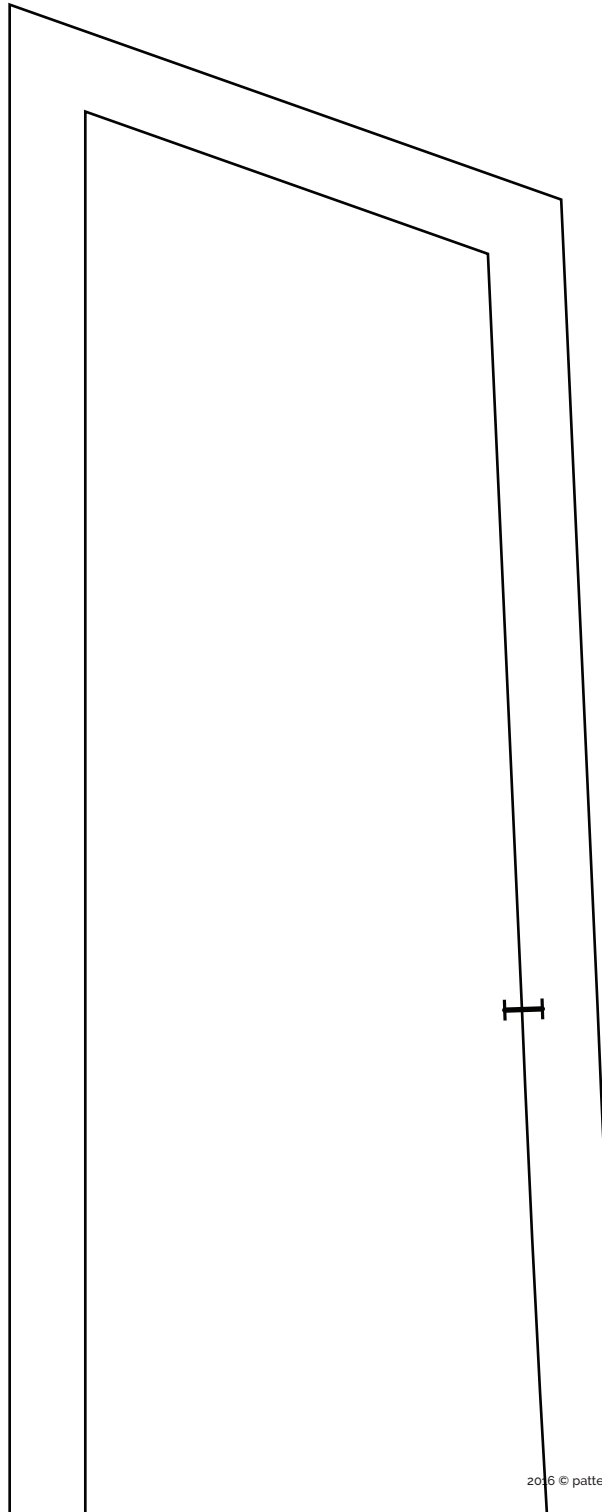
1/2 1 3/4 5/8 3/4 1 1/8 1 1/4 2in 3in



0cm 1cm 2cm 3cm 4cm 5cm

G-3

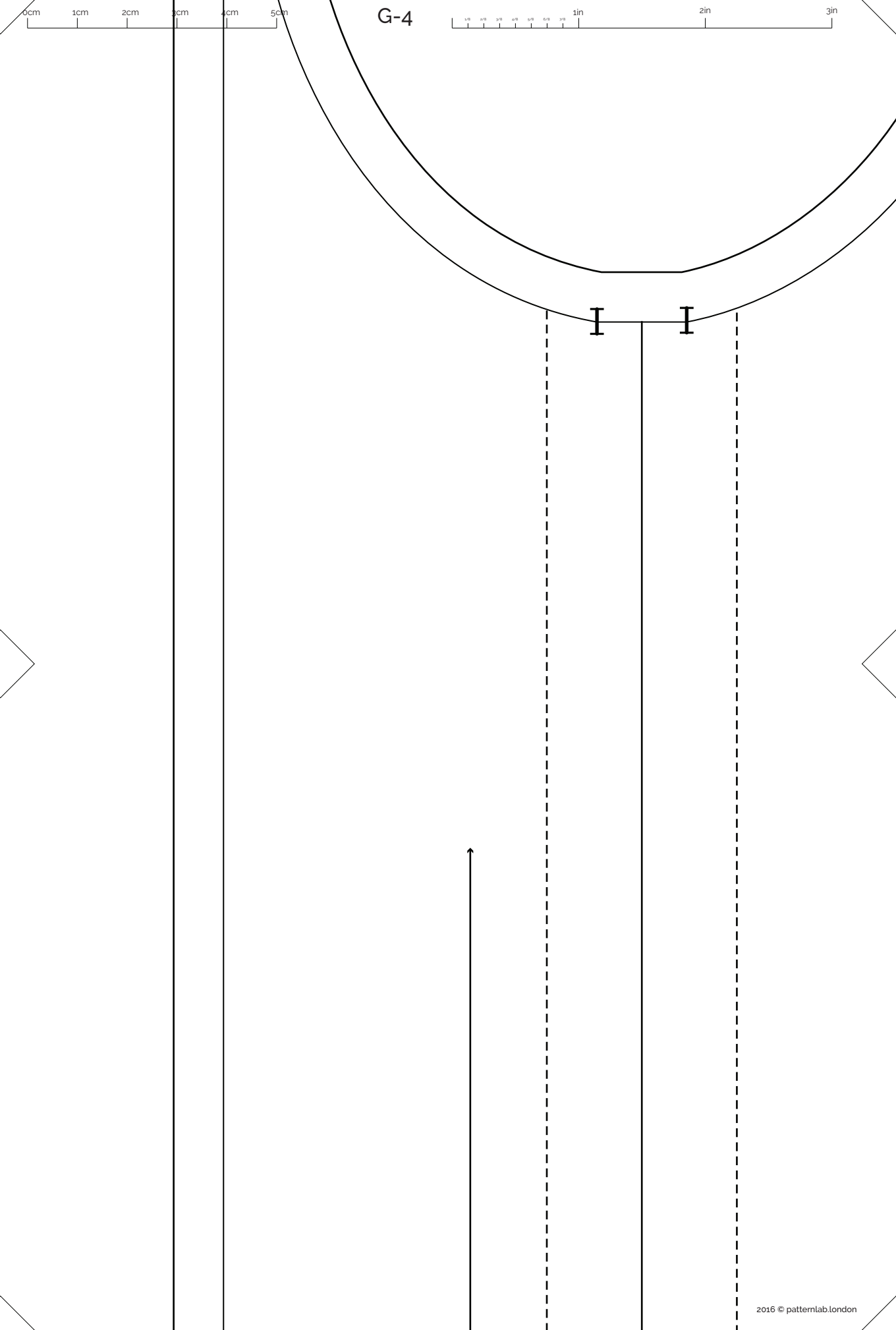
1/8 1/4 3/8 1/2 5/8 3/4 1in 2in 3in



0cm 1cm 2cm 3cm 4cm 5cm

G-4

1/8 1/4 3/8 1/2 5/8 3/4 1in 2in 3in





G-5



aurelia & andrea
 (aurelia-andrea.com)
 TATSULOK
 BARONG DRESS (#AA20002)
 Oct 2020
 Front Placket
 7 of 14
 Main Fabric - Fused
 Cut 1 Single

0cm 1cm 2cm 3cm 4cm 5cm

G-6

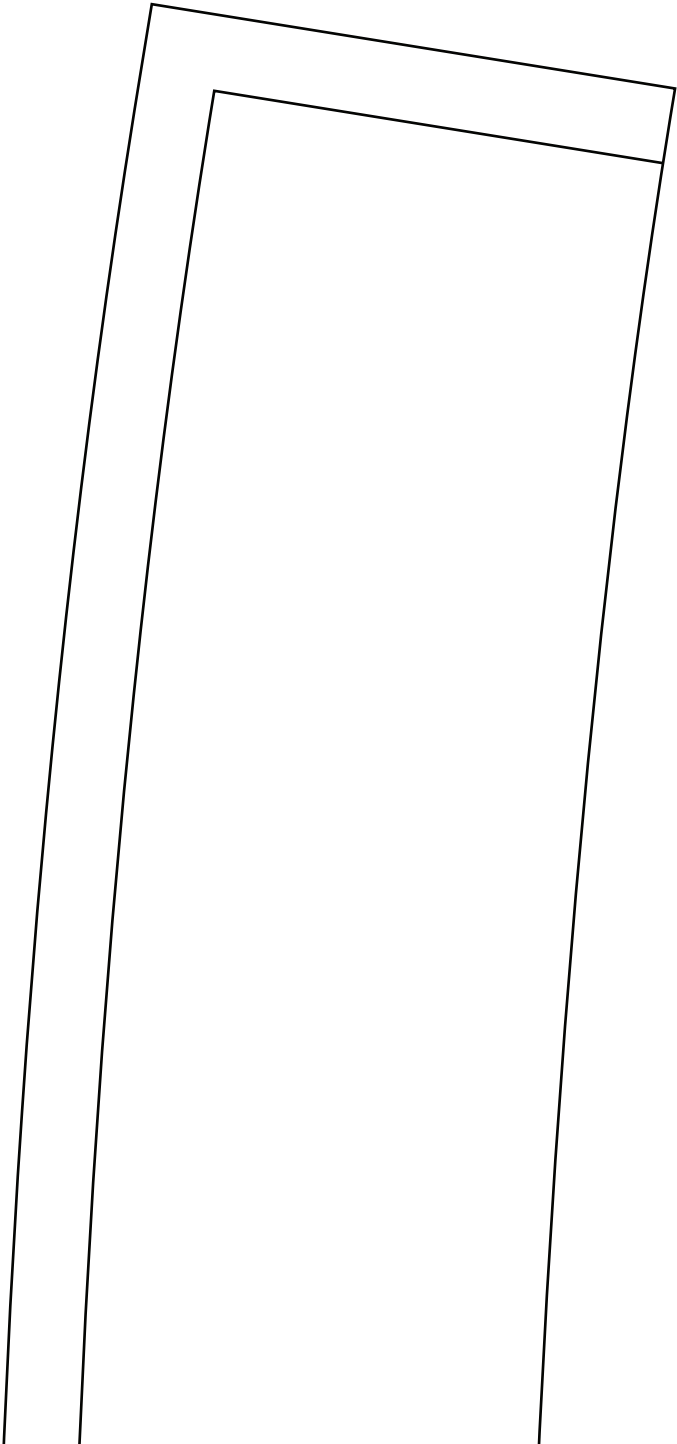
1/8 1/4 3/8 1/2 5/8 3/4 1in 2in 3in



0cm 1cm 2cm 3cm 4cm 5cm

H-1

1/4 1/2 3/4 1in 2in 3in



0cm 1cm 2cm 3cm 4cm 5cm

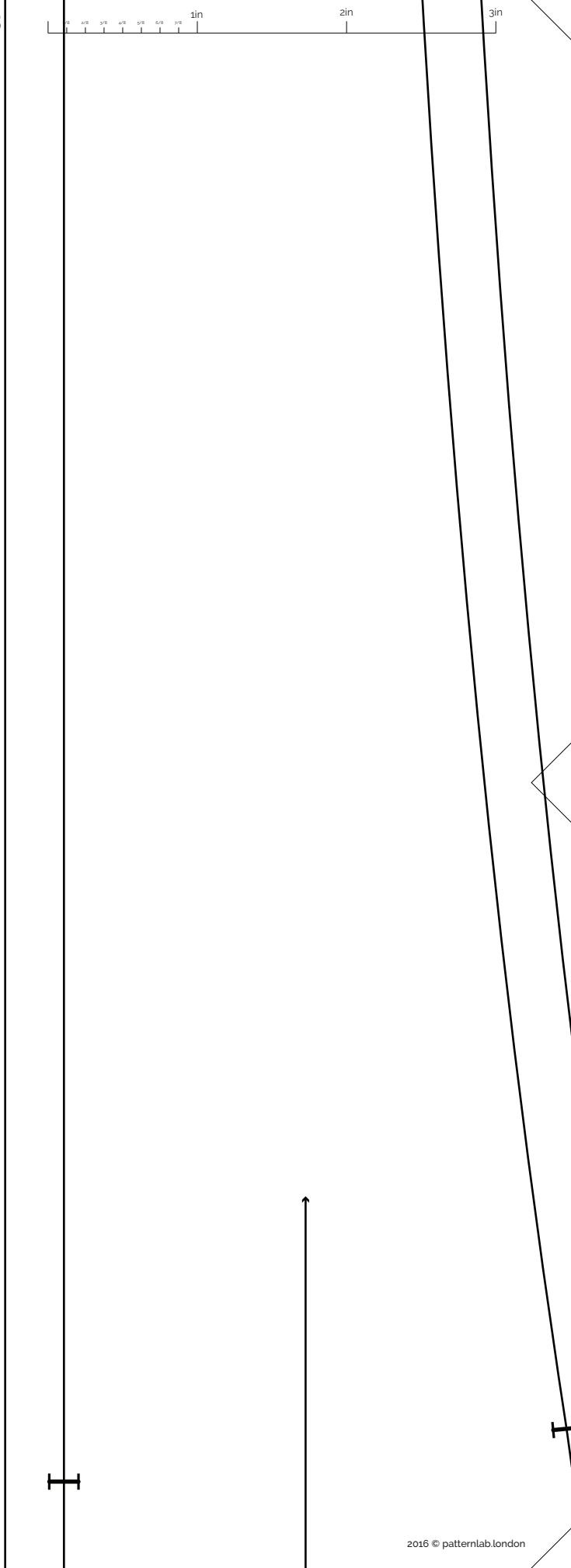
H-2

1/2 1/4 3/8 1/2 5/8 3/4 1 2in 3in





H-3



0cm 1cm 2cm 3cm 4cm 5cm

H-4

0.5 1in 2in 3in



TATSUOK
 DRESS (#AA20002)
 Oct 2020
 t center Panel
 6 of 14
 Main Fabric
 ut 1 Single
 Allowance Fused
 Seam Allowance

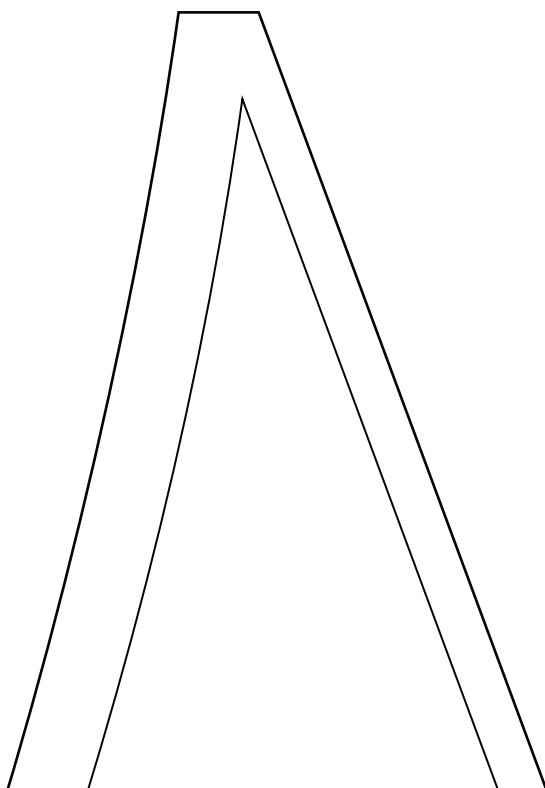
ella & andrea
 (tella-andrea.com)

0cm 1cm 2cm 3cm 4cm 5cm

H-5

1/8 1/4 3/8 1/2 5/8 3/4 1in 2in 3in

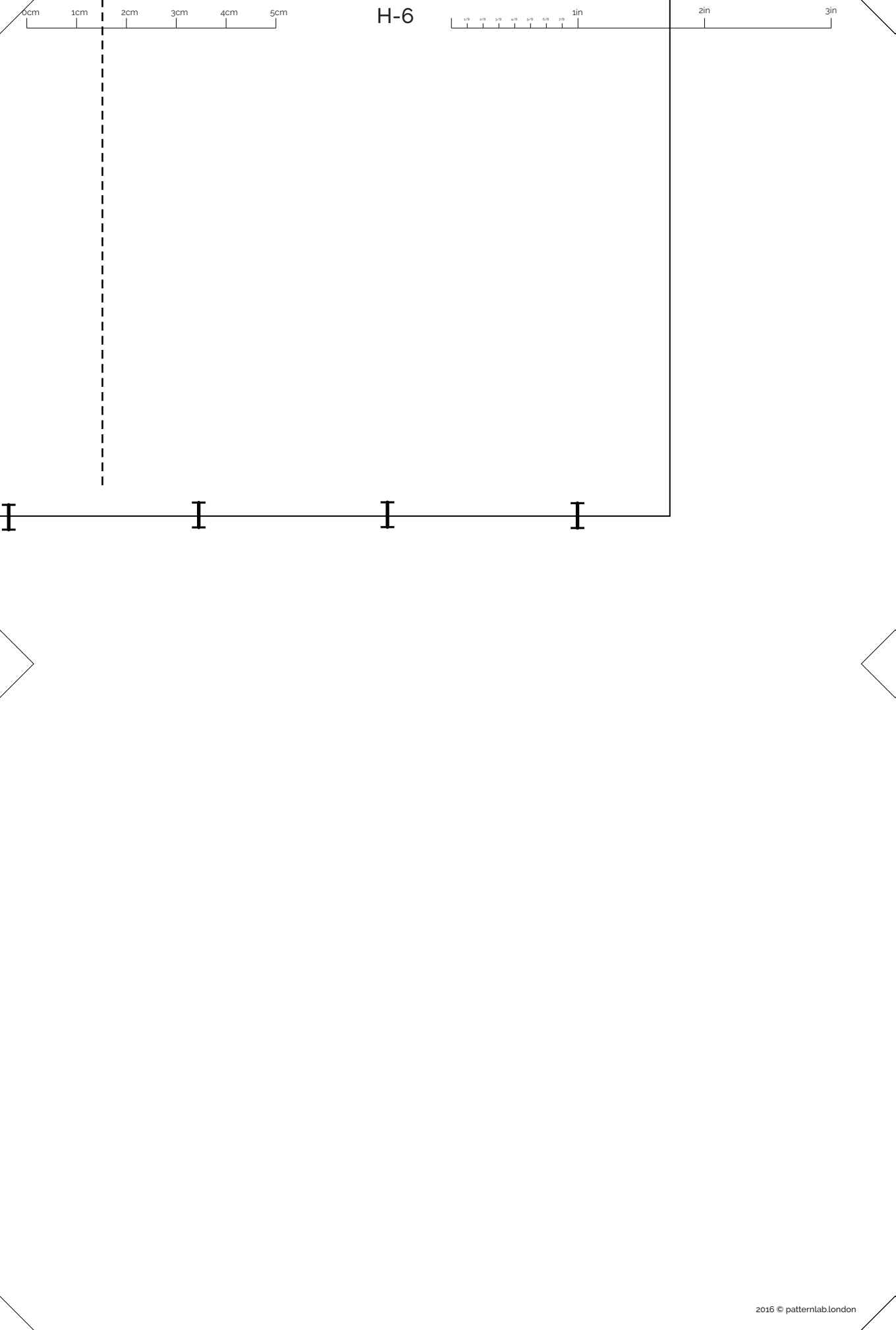
aurea
 (an
 BARONG I
 Fron
 M
 C
 Seam
 1cm



0cm 1cm 2cm 3cm 4cm 5cm

H-6

1/8 1/4 3/8 1/2 5/8 3/4 1in 2in 3in



0cm 1cm 2cm 3cm 4cm 5cm

I-1

1in 2in 3in



aurelia & andrea
(aurelia-andrea.com)

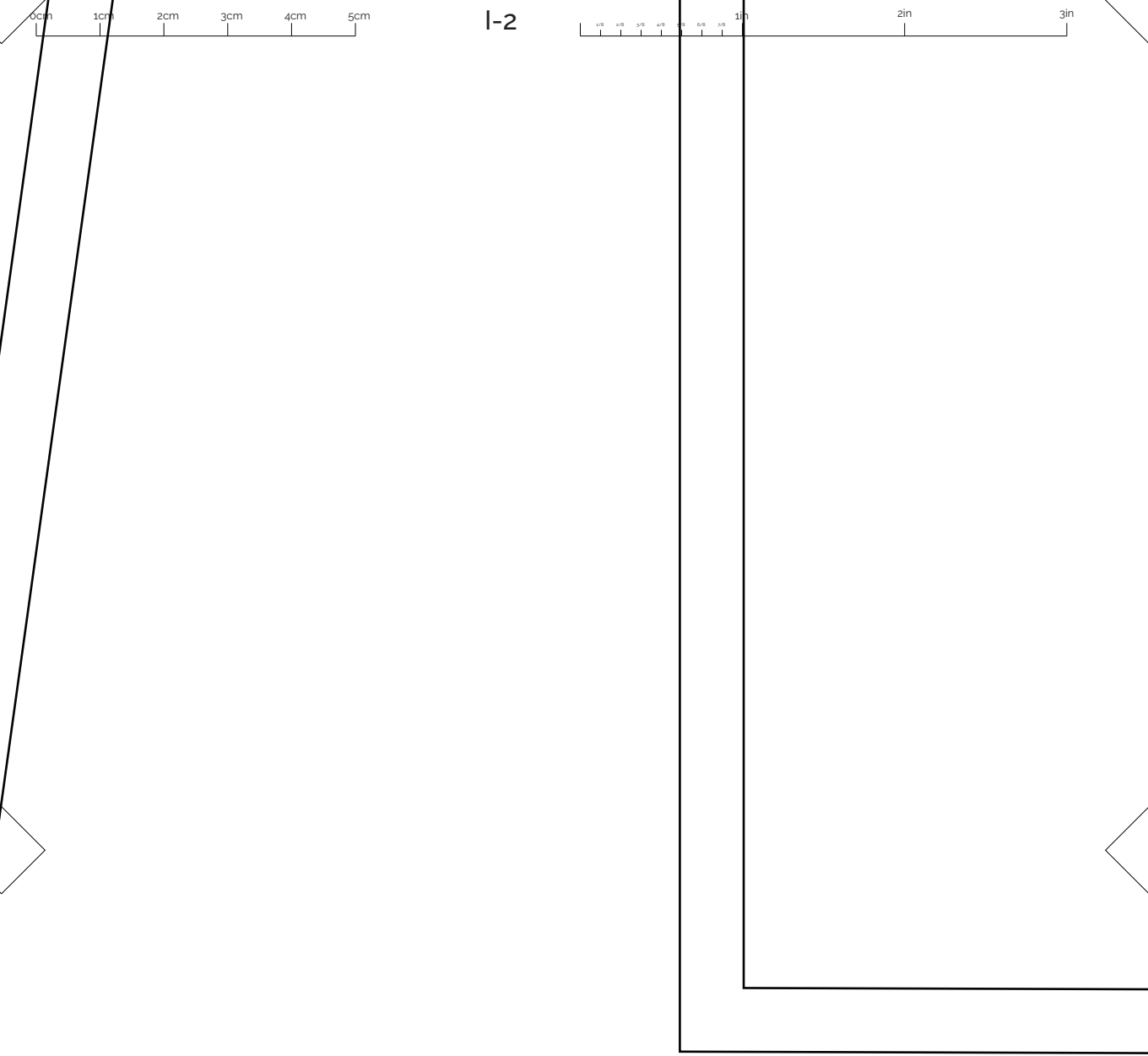
TATSULOK
BARONG DRESS (#AA20002)
 Oct 2020

Front Center Hem Facing
 13 of 14
 Main Fabric Fused
 Cut 1 Single





I-2





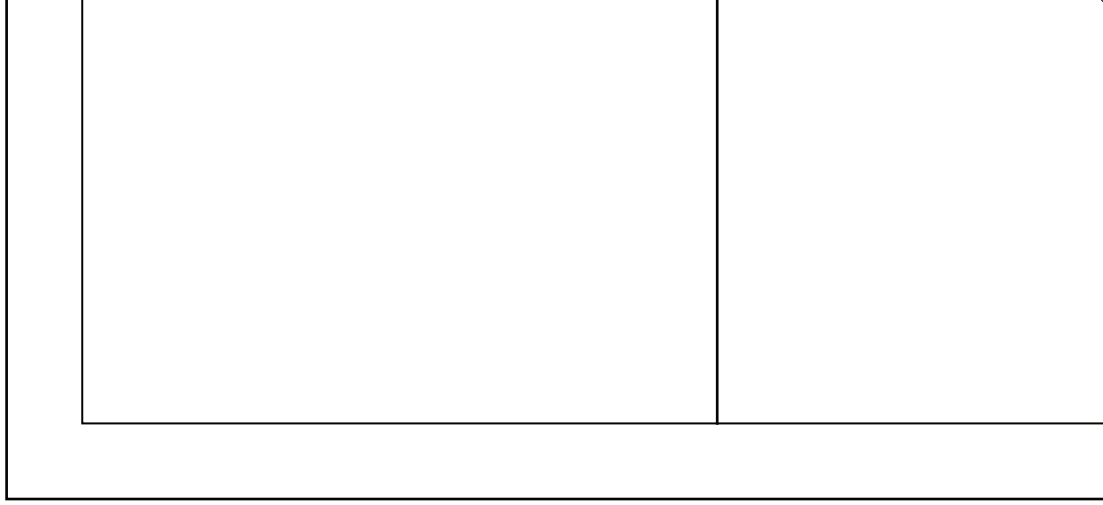
I-3



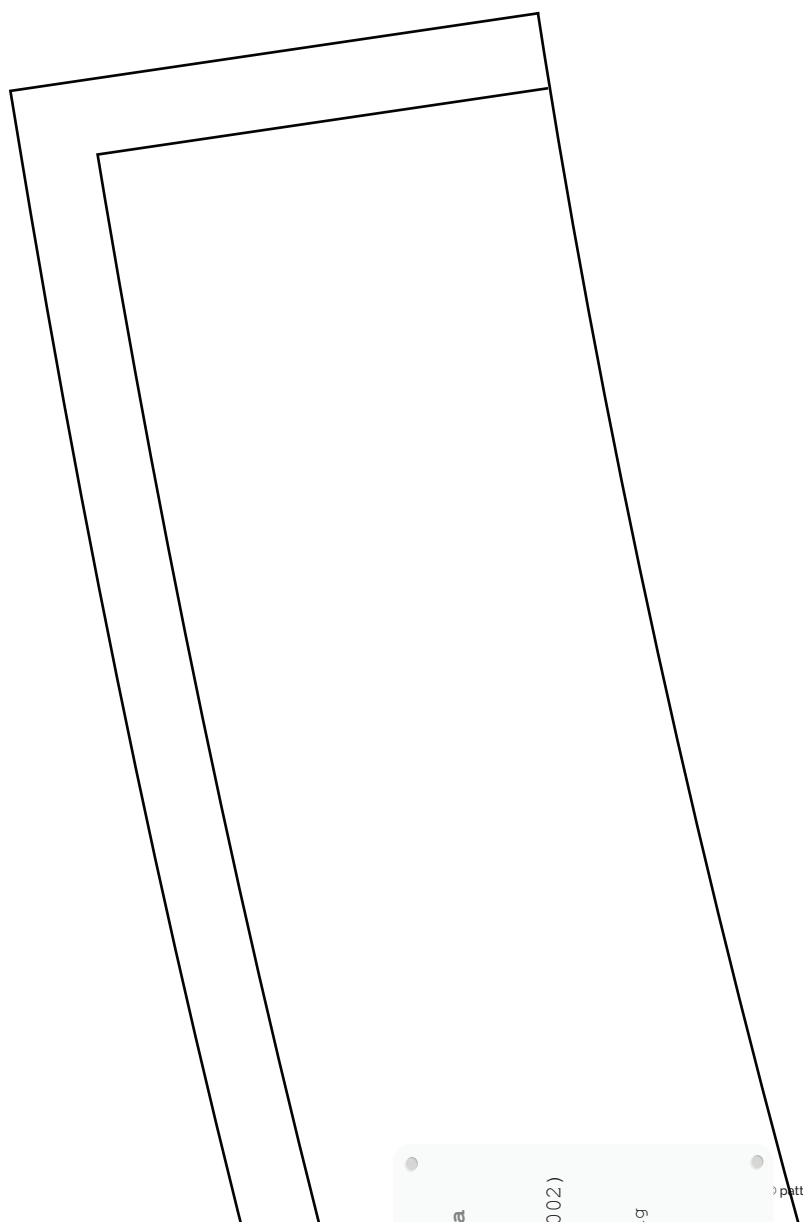
0cm 1cm 2cm 3cm 4cm 5cm

I-4

1/8 1/4 3/8 1/2 5/8 3/4 1in 2in 3in



I



0cm 1cm 2cm 3cm 4cm 5cm

0 1/8 1/4 3/8 1/2 5/8 3/4 7/8 1in 2in 3in

I-5

aurelia & andrea
(aurelia-andrea.com)

TATSULOK
BARONG DRESS (#AA20002)
Oct 2020

Top Collar
9 of 14
Main Fabric Fused
Cut 1 Single



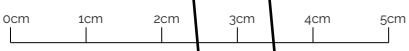
I

I

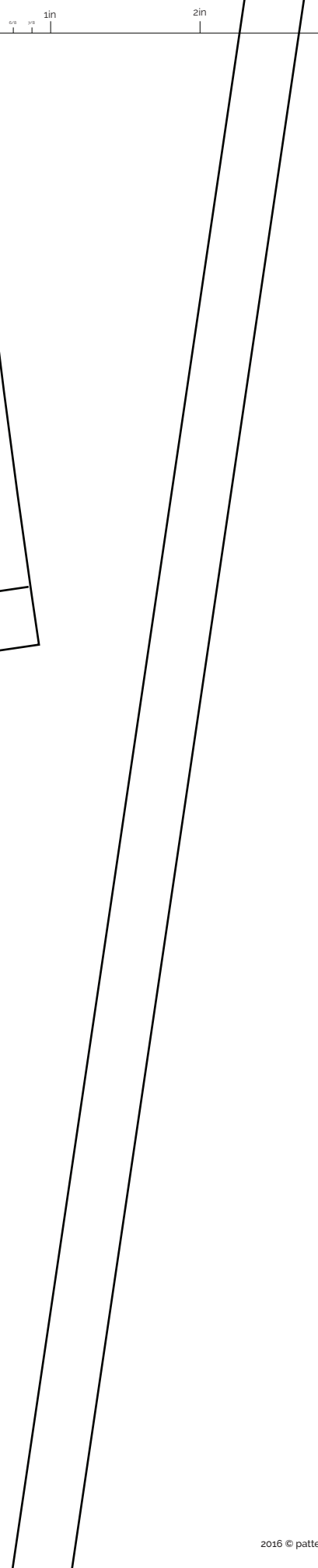
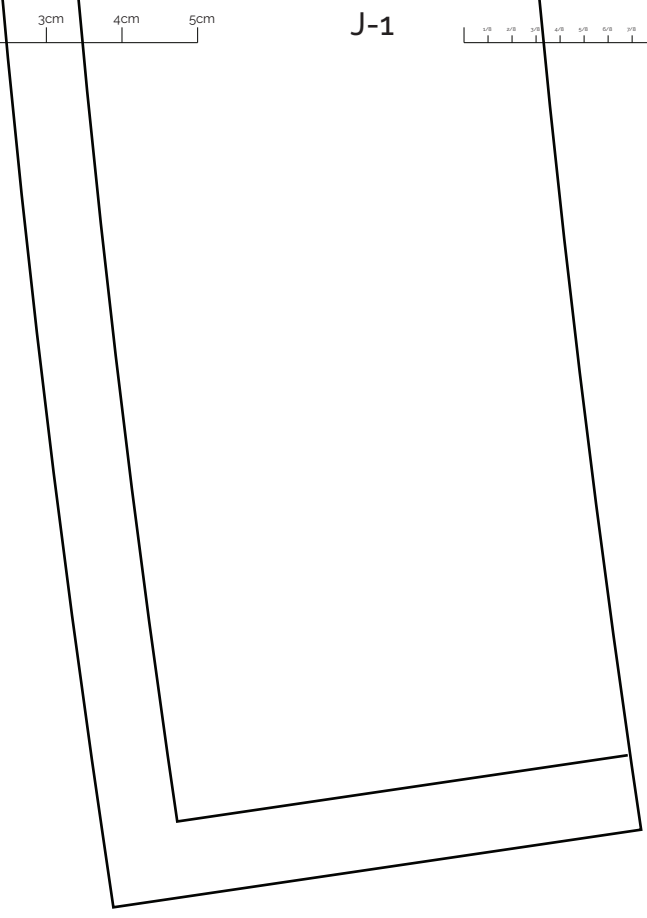


I-6





J-1





J-2



0cm 1cm 2cm 3cm 4cm 5cm

J-3

1/8 1/4 3/8 1/2 5/8 3/4 1in 2in 3in

0cm 1cm 2cm 3cm 4cm 5cm

J-4

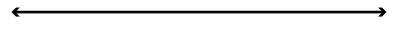
0 1 2 3 4 5

0 1 2 3 4 5

aurelia & andre
(aurelia-andrea.com)

TATSULOK
BARONG DRESS (#AA20)
Oct 2020

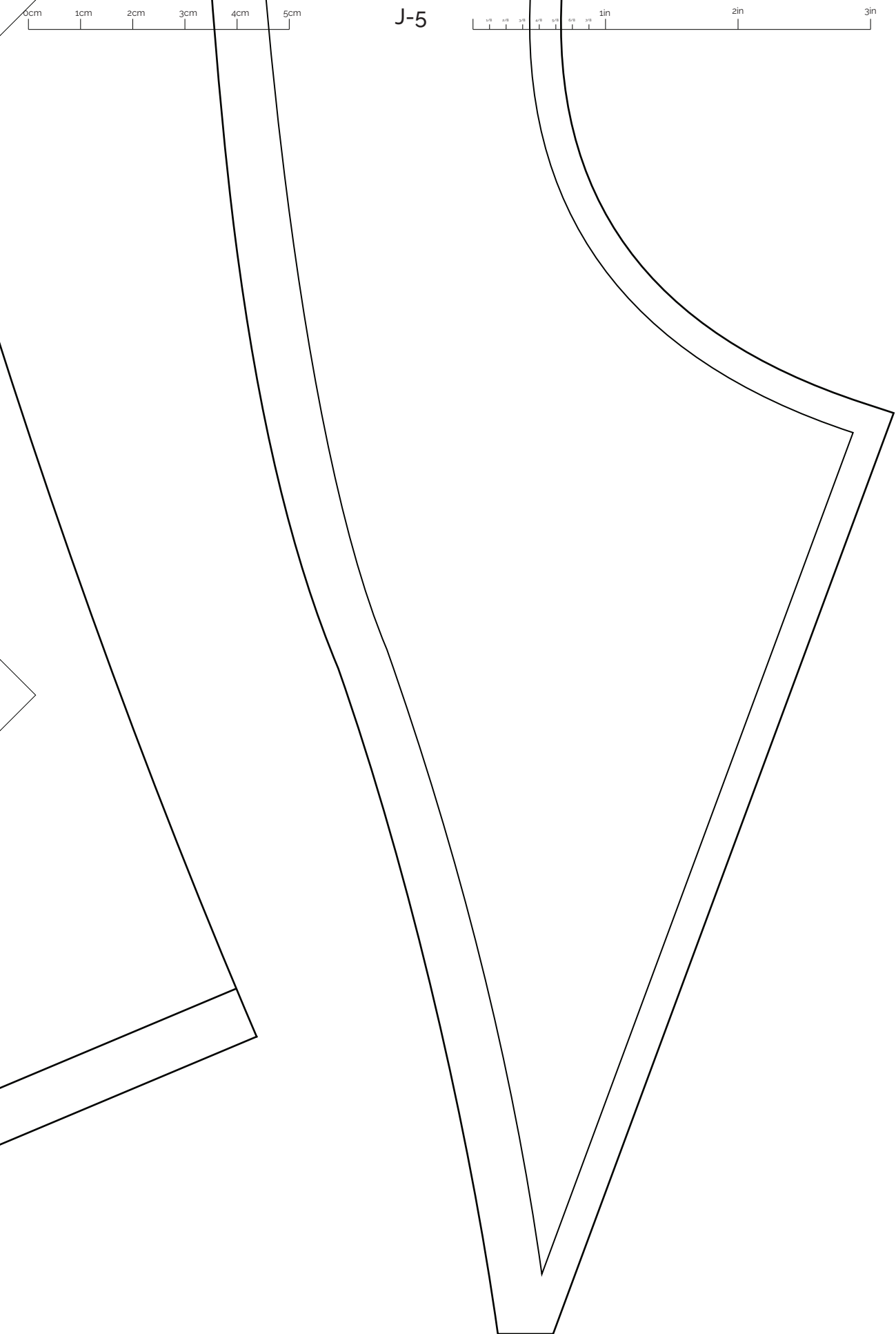
Front Side Hem Facing
14 of 14
Main Fabric Fused
Cut 1 Single



0cm 1cm 2cm 3cm 4cm 5cm

J-5

1/8 1/4 3/8 1/2 5/8 3/4 1in 2in 3in



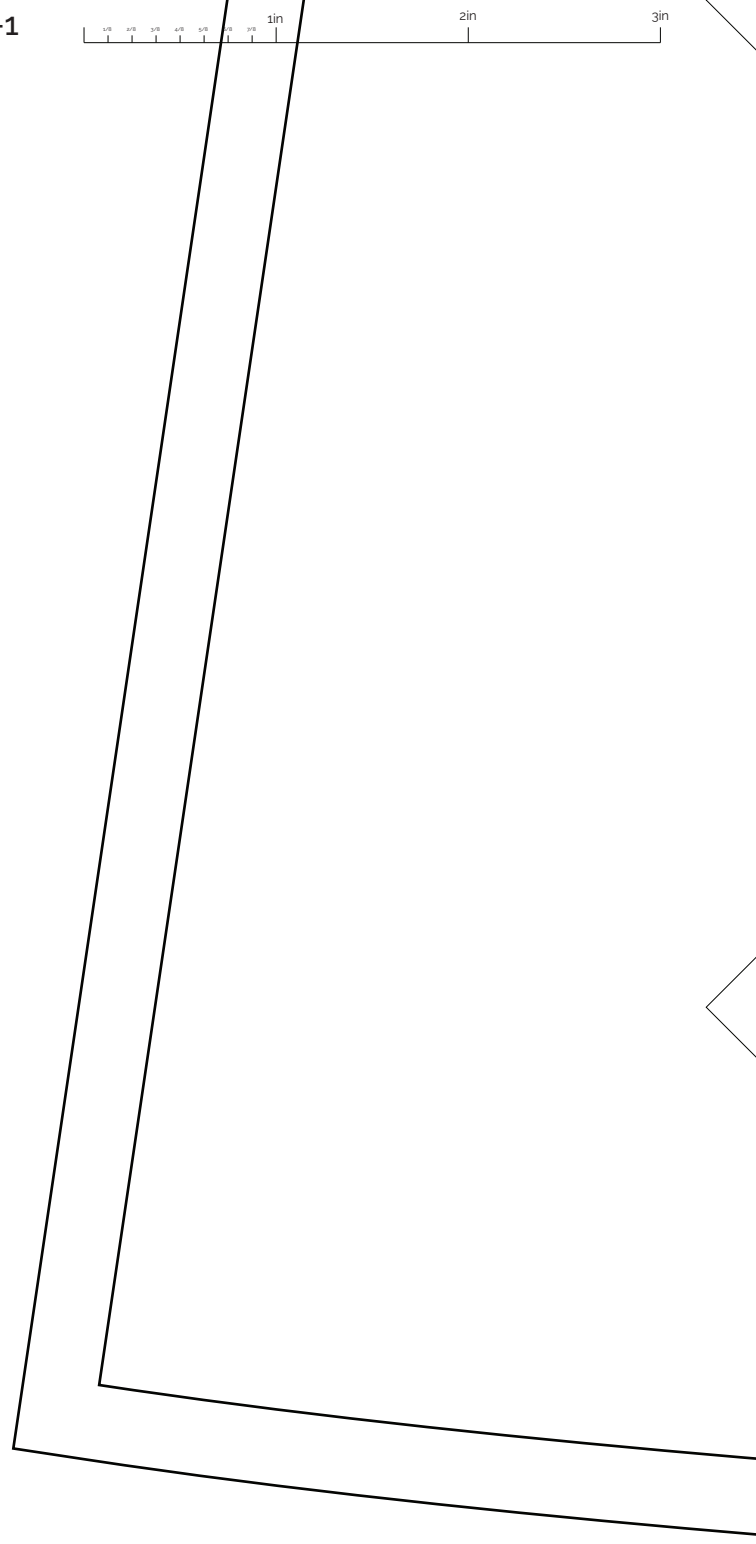


J-6



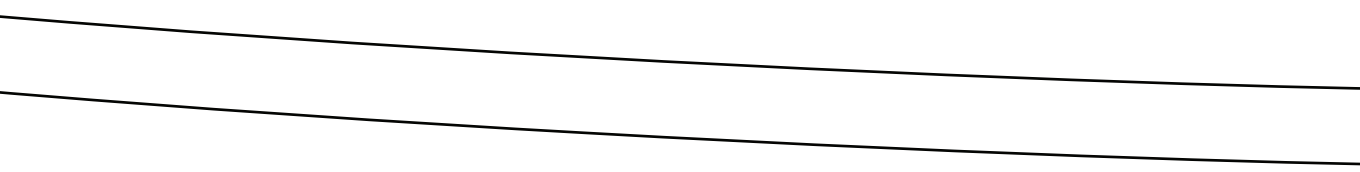


K-1





K-2



0cm 1cm 2cm 3cm

1in 2in 3in

Front Middle Panel
5 of 14
Main Fabric
Cut 1 Single
Seam Allowance Fused
1cm Seam Allowance

TATSULOK
BARONG DRESS (#AA20002)
Oct 2020

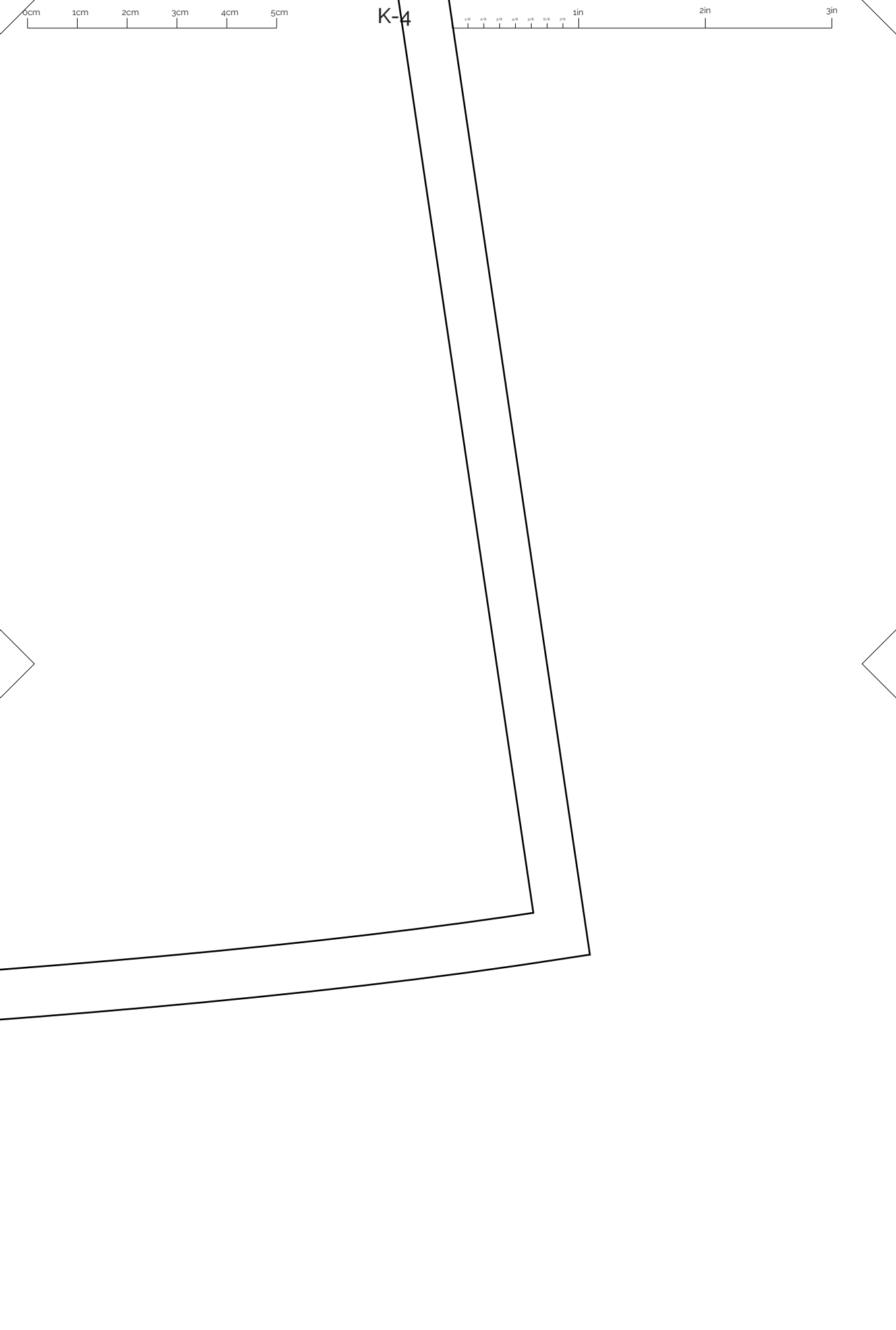
aurelia & andrea
(aurelia-andrea.com)

I

0cm 1cm 2cm 3cm 4cm 5cm

K-4

1/8 1/4 3/8 1/2 5/8 3/4 1in 2in 3in





K-5





K-6

